



**INTERNATIONAL  
GEMOLOGICAL  
INSTITUTE**

**ELECTRONIC COPY**

**LABORATORY GROWN DIAMOND REPORT**

**LG544275077**

**IGI LABORATORY GROWN  
DIAMOND ID REPORT**

September 30, 2022

IGI Report Number **LG544275077**

**MARQUISE BRILLIANT**

**10.27 X 5.11 X 3.17 MM**

Carat Weight	0.96 CARAT
Color Grade	FANCY VIVID PURPLISH PINK
Clarity Grade	VS 1
Polish	EXCELLENT
Symmetry	EXCELLENT
Fluorescence	STRONG
Inscription(s)	LABGROWN IGI LG544275077

Comments: This Laboratory Grown Diamond was created by High Pressure High Temperature (HPHT) growth process. Indications of post-growth treatment.

**LABORATORY GROWN DIAMOND REPORT**

**IGI LABORATORY GROWN DIAMOND IDENTIFICATION REPORT**

September 30, 2022

IGI Report Number **LG544275077**

Description **LABORATORY GROWN DIAMOND**

Shape and Cutting Style **MARQUISE BRILLIANT**

Measurements **10.27 X 5.11 X 3.17 MM**

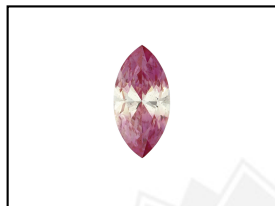
**GRADING RESULTS**

Carat Weight	0.96 CARAT
Color Grade	FANCY VIVID PURPLISH PINK
Clarity Grade	VS 1

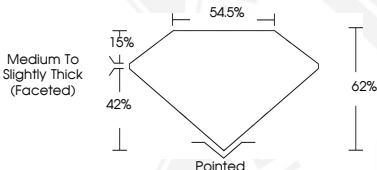
**ADDITIONAL GRADING INFORMATION**

Polish	EXCELLENT
Symmetry	EXCELLENT
Fluorescence	STRONG
Inscription(s)	LABGROWN IGI LG544275077

Comments: This Laboratory Grown Diamond was created by High Pressure High Temperature (HPHT) growth process. Indications of post-growth treatment.



**LASERSCRIBE<sup>SM</sup>**  
Sample Images Used



**IGI LABORATORY GROWN  
DIAMOND ID REPORT**

September 30, 2022

IGI Report Number **LG544275077**

**MARQUISE BRILLIANT**

**10.27 X 5.11 X 3.17 MM**

Carat Weight	0.96 CARAT
Color Grade	FANCY VIVID PURPLISH PINK
Clarity Grade	VS 1
Polish	EXCELLENT
Symmetry	EXCELLENT
Fluorescence	STRONG
Inscription(s)	LABGROWN IGI LG544275077

Comments: This Laboratory Grown Diamond was created by High Pressure High Temperature (HPHT) growth process. Indications of post-growth treatment.

THIS DOCUMENT WAS PRODUCED WITH THE FOLLOWING SECURITY MEASURES: SPECIAL DOCUMENT PAPER, INK SCREENS, WATERMARK, BACKGROUND DESIGN, HOLOGRAM AND OTHER SECURITY FEATURES NOT LISTED AND DO EXCEED DOCUMENT SECURITY INDUSTRY GUIDELINES.

For terms & conditions and to verify this report, please visit [www.igi.org](http://www.igi.org)