



ELECTRONIC COPY

LABORATORY GROWN DIAMOND REPORT

August 29, 2022
IGI Report Number LG544277900
Description LABORATORY GROWN DIAMOND
Shape and Cutting Style ROUND BRILLIANT
Measurements 10.24 - 10.29 X 6.20 MM

GRADING RESULTS

Carat Weight 4.01 CARATS
Color Grade E
Clarity Grade VS 1
Cut Grade IDEAL

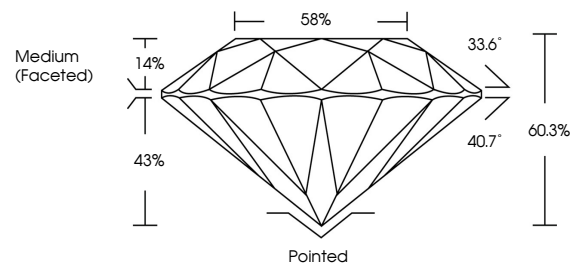
ADDITIONAL GRADING INFORMATION

Polish EXCELLENT
Symmetry EXCELLENT
Fluorescence NONE
Inscription(s) LABGROWN IGI LG544277900

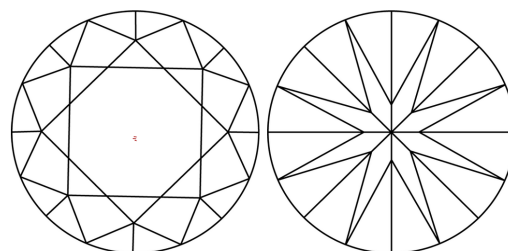
Comments: As Grown - No indication of post-growth treatment. This Laboratory Grown Diamond was created by High Pressure High Temperature (HPHT) growth process. Type II

LG544277900

PROPORTIONS



CLARITY CHARACTERISTICS



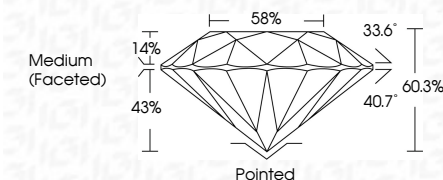
KEY TO SYMBOLS

Red symbols indicate internal characteristics. Green symbols indicate external characteristics.

GRADING SCALES

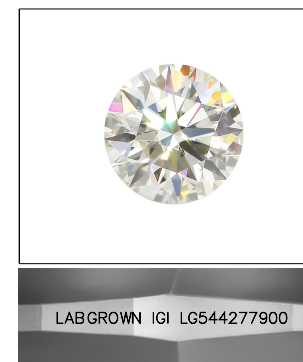
Table showing Color Grading Scale (CL to LT) and Clarity (10x) Grading Scale (FL to I).

August 29, 2022
IGI Report Number LG544277900
Description LABORATORY GROWN DIAMOND
Shape and Cutting Style ROUND BRILLIANT
Measurements 10.24 - 10.29 X 6.20 MM
GRADING RESULTS
Carat Weight 4.01 CARATS
Color Grade E
Clarity Grade VS 1
Cut Grade IDEAL



ADDITIONAL GRADING INFORMATION

Polish EXCELLENT
Symmetry EXCELLENT
Fluorescence NONE
Inscription(s) LABGROWN IGI LG544277900
Comments: As Grown - No indication of post-growth treatment. This Laboratory Grown Diamond was created by High Pressure High Temperature (HPHT) growth process. Type II



LASERSCRIBE SM Sample Image Used



Summary table of report details including date, report number, description, measurements, grading results, and additional information.