



ELECTRONIC COPY

LABORATORY GROWN DIAMOND REPORT

September 1, 2022	
IGI Report Number	LG544280139
Description	LABORATORY GROWN DIAMOND
Shape and Cutting Style	ROUND BRILLIANT
Measurements	8.97 - 9.00 X 5.51 MM

GRADING RESULTS

Carat Weight	2.72 CARATS
Color Grade	G
Clarity Grade	VS 1
Cut Grade	IDEAL

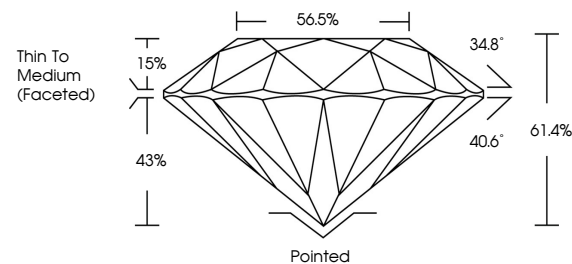
ADDITIONAL GRADING INFORMATION

Polish	EXCELLENT
Symmetry	EXCELLENT
Fluorescence	NONE
Inscription(s)	LABGROWN G LG544280139

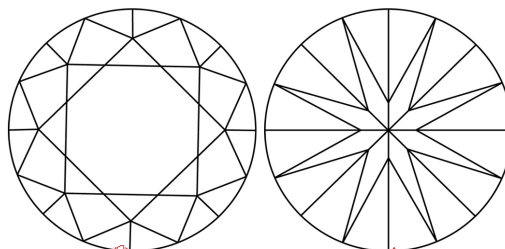
Comments: HEARTS & ARROWS
This Laboratory Grown Diamond was created by
Chemical Vapor Deposition (CVD) growth process and
may include post-growth treatment.
Type IIa

LG544280139

PROPORTIONS



CLARITY CHARACTERISTICS



KEY TO SYMBOLS

Red symbols indicate internal characteristics.
Green symbols indicate external characteristics.

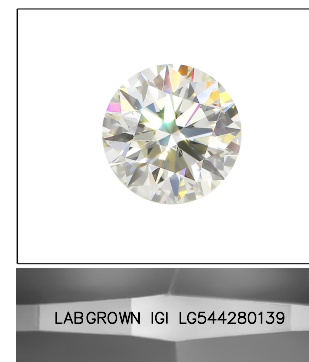


www.igi.org

LABORATORY GROWN
DIAMOND REPORT

GRADING SCALES

COLOR GRADING SCALE	CL		NC	FT	VLT	LT
	COLORLESS D-F		NEAR COLORLESS G-J	FAINT K-M	VERY LIGHT N-R	LIGHT S-Z
CLARITY (10x) GRADING SCALE	FL	IF	VVS	VS	SI	I
	FLAWLESS INTERNALLY FLAWLESS		VERY VERY SLIGHTLY INCLUDED	VERY SLIGHTLY INCLUDED	SLIGHTLY INCLUDED	INCLUDED

LASERSCRIBESM

Sample Image Used

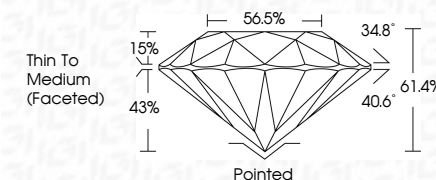


© IGI 2020, International Gemological Institute

FD - 10 20

LABORATORY GROWN DIAMOND REPORT

September 1, 2022	
IGI Report Number	LG544280139
Description	LABORATORY GROWN DIAMOND
Shape and Cutting Style	ROUND BRILLIANT
Measurements	8.97 - 9.00 X 5.51 MM
GRADING RESULTS	
Carat Weight	2.72 CARATS
Color Grade	G
Clarity Grade	VS 1
Cut Grade	IDEAL



ADDITIONAL GRADING INFORMATION

Polish	EXCELLENT
Symmetry	EXCELLENT
Fluorescence	NONE
Inscription(s)	LABGROWN IGI LG544280139

Inscription(s) LABGROWN IGI LG544280139

Comments: HEARTS & ARROWS
This Laboratory Grown Diamond was created by
Chemical Vapor Deposition (CVD) growth process and
may include post-growth treatment.
Type IIa



September 1, 2022
GJ Report No 1G544280139

ROUND BRILLIANT	2.87 - 3.00 X 5.51 MM	2.72 CARATS
Color Weight		
Color Grade		
Clarity Grade	VS 1	
Cut Grade	IDEAL	
Depth	61.4%	
Table	56.5%	
Grade	Thin To Medium (Graded)	
Cluier	Painted	
Polish	EXCELLENT	
Symmetry	EXCELLENT	
Fluorescence	NONE	
Inscription(s)	LARGESON (G) USA/2001/139	

Comments:

HEARTS & ARROWS
This Laboratory Grown Diamond was created by Chemical Vapor Deposition (CVD) growth process and may include post-growth treatment.

THIS DOCUMENT WAS PRODUCED WITH THE FOLLOWING SECURITY MEASURES: SPECIAL DOCUMENT PAPER, INK SCREENS, WATERMARK, BACKGROUND DESIGNS, HOLOGRAM AND OTHER SECURITY FEATURES NOT LISTED AND DO EXCEED DOCUMENT SECURITY INDUSTRY GUIDELINES