



**INTERNATIONAL  
GEMOLOGICAL  
INSTITUTE**

**ELECTRONIC COPY**

**LABORATORY GROWN  
DIAMOND REPORT**

**IGI LABORATORY GROWN  
DIAMOND ID REPORT**

September 3, 2022

IGI Report Number **LG544280510**

**ROUND BRILLIANT**

**5.84 - 5.86 X 3.65 MM**

Carat Weight	0.76 CARAT
Color Grade	D
Clarity Grade	VS 1
Cut Grade	IDEAL
Polish	EXCELLENT
Symmetry	EXCELLENT
Fluorescence	NONE
Inscription(s)	LABGROWN IGI LG544280510

Comments: As Grown - No indication of post-growth treatment.  
This Laboratory Grown Diamond was created by High Pressure High Temperature (HPHT) growth process.  
Type II

**LABORATORY GROWN DIAMOND REPORT**

**IGI LABORATORY GROWN DIAMOND IDENTIFICATION REPORT**

September 3, 2022

IGI Report Number **LG544280510**

Description **LABORATORY GROWN DIAMOND**

Shape and Cutting Style **ROUND BRILLIANT**

Measurements **5.84 - 5.86 X 3.65 MM**

**GRADING RESULTS**

Carat Weight **0.76 CARAT**

Color Grade **D**

Clarity Grade **VS 1**

Cut Grade **IDEAL**

**ADDITIONAL GRADING INFORMATION**

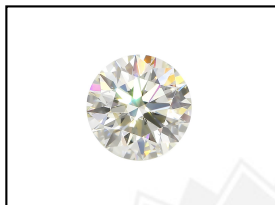
Polish **EXCELLENT**

Symmetry **EXCELLENT**

Fluorescence **NONE**

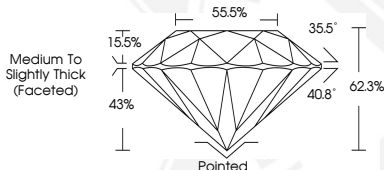
Inscription(s) **LABGROWN IGI LG544280510**

Comments: As Grown - No indication of post-growth treatment.  
This Laboratory Grown Diamond was created by High Pressure High Temperature (HPHT) growth process.  
Type II



LABGROWN IGI LG544280510

**LASERSCRIBE<sup>SM</sup>**  
Sample Images Used



**IGI LABORATORY GROWN  
DIAMOND ID REPORT**

September 3, 2022

IGI Report Number **LG544280510**

**ROUND BRILLIANT**

**5.84 - 5.86 X 3.65 MM**

Carat Weight	0.76 CARAT
Color Grade	D
Clarity Grade	VS 1
Cut Grade	IDEAL
Polish	EXCELLENT
Symmetry	EXCELLENT
Fluorescence	NONE
Inscription(s)	LABGROWN IGI LG544280510

Comments: As Grown - No indication of post-growth treatment.  
This Laboratory Grown Diamond was created by High Pressure High Temperature (HPHT) growth process.  
Type II

THIS DOCUMENT WAS PRODUCED WITH THE FOLLOWING SECURITY MEASURES: SPECIAL DOCUMENT PAPER, INK SCREENS, WATERMARK, BACKGROUND DESIGN, HOLOGRAM AND OTHER SECURITY FEATURES NOT LISTED AND DO EXCEED DOCUMENT SECURITY INDUSTRY GUIDELINES.

For terms & conditions and to verify this report, please visit [www.igi.org](http://www.igi.org)