



ELECTRONIC COPY

LABORATORY GROWN DIAMOND REPORT

September 1, 2022
IGI Report Number LG544281001
Description LABORATORY GROWN DIAMOND
Shape and Cutting Style ROUND BRILLIANT
Measurements 9.51 - 9.55 X 5.88 MM

GRADING RESULTS

Carat Weight 3.25 CARATS
Color Grade F
Clarity Grade VS 1
Cut Grade IDEAL

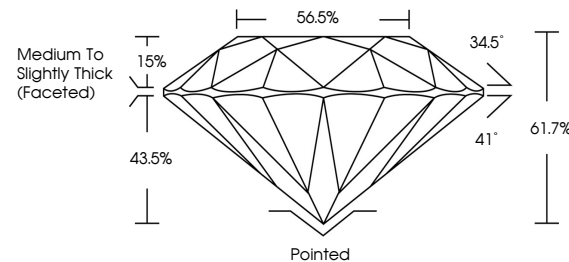
ADDITIONAL GRADING INFORMATION

Polish EXCELLENT
Symmetry EXCELLENT
Fluorescence NONE
Inscription(s) LABGROWN IGI LG544281001

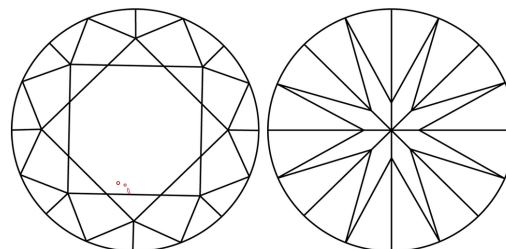
Comments: As Grown - No indication of post-growth treatment. This Laboratory Grown Diamond was created by High Pressure High Temperature (HPHT) growth process. Type II

LG544281001

PROPORTIONS



CLARITY CHARACTERISTICS



KEY TO SYMBOLS

Red symbols indicate internal characteristics. Green symbols indicate external characteristics.

September 1, 2022
IGI Report Number LG544281001
Description LABORATORY GROWN DIAMOND
Shape and Cutting Style ROUND BRILLIANT
Measurements 9.51 - 9.55 X 5.88 MM

GRADING RESULTS

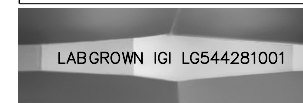
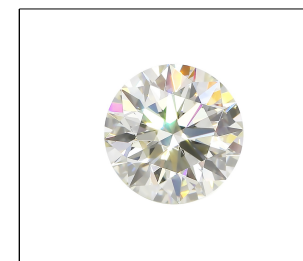
Carat Weight 3.25 CARATS
Color Grade F
Clarity Grade VS 1
Cut Grade IDEAL

ADDITIONAL GRADING INFORMATION

Polish EXCELLENT
Symmetry EXCELLENT
Fluorescence NONE
Inscription(s) LABGROWN IGI LG544281001
Comments: As Grown - No indication of post-growth treatment. This Laboratory Grown Diamond was created by High Pressure High Temperature (HPHT) growth process. Type II

GRADING SCALES

Table with 5 columns for Color and Clarity grading scales, listing categories like CL, NC, FT, VLT, LT and their corresponding descriptions.



LASERSCRIBESM

Sample Image Used



Summary table of diamond details including Report No, Shape, Measurements, Carat Weight, Color Grade, Clarity Grade, Depth, Table, Girdle, Cut, Polish, Symmetry, Fluorescence, and Inscription(s).