



ELECTRONIC COPY

LABORATORY GROWN DIAMOND REPORT

September 1, 2022
IGI Report Number LG544281484
Description LABORATORY GROWN DIAMOND
Shape and Cutting Style ROUND BRILLIANT
Measurements 6.28 - 6.31 X 3.95 MM

GRADING RESULTS

Carat Weight 1.00 CARAT
Color Grade D
Clarity Grade SI 2
Cut Grade VERY GOOD

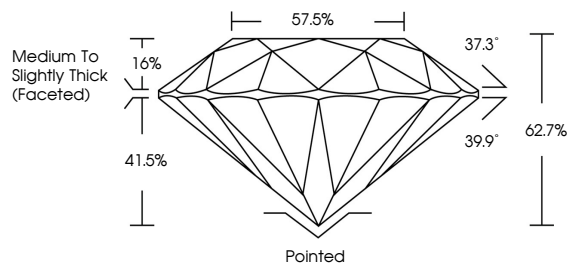
ADDITIONAL GRADING INFORMATION

Polish EXCELLENT
Symmetry EXCELLENT
Fluorescence NONE
Inscription(s) LABGROWN IGI LG544281484

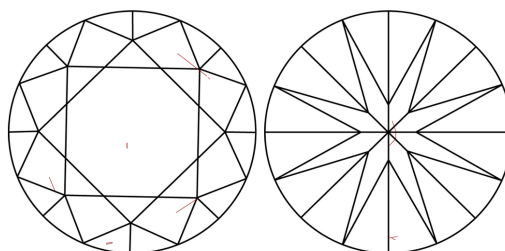
Comments: As Grown - No indication of post-growth treatment. This Laboratory Grown Diamond was created by High Pressure High Temperature (HPHT) growth process. Type II

LG544281484

PROPORTIONS



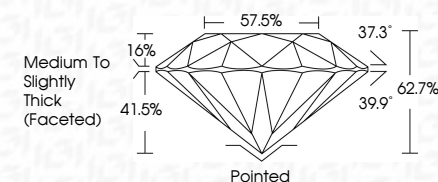
CLARITY CHARACTERISTICS



KEY TO SYMBOLS

Red symbols indicate internal characteristics. Green symbols indicate external characteristics.

September 1, 2022
IGI Report Number LG544281484
Description LABORATORY GROWN DIAMOND
Shape and Cutting Style ROUND BRILLIANT
Measurements 6.28 - 6.31 X 3.95 MM
GRADING RESULTS
Carat Weight 1.00 CARAT
Color Grade D
Clarity Grade SI 2
Cut Grade VERY GOOD

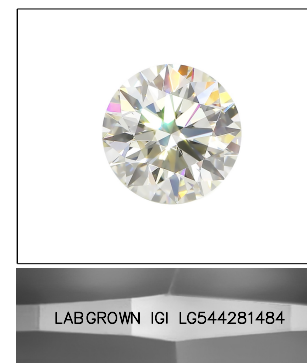


ADDITIONAL GRADING INFORMATION

Polish EXCELLENT
Symmetry EXCELLENT
Fluorescence NONE
Inscription(s) LABGROWN IGI LG544281484
Comments: As Grown - No indication of post-growth treatment. This Laboratory Grown Diamond was created by High Pressure High Temperature (HPHT) growth process. Type II

GRADING SCALES

Table with 2 columns: COLOR GRADING SCALE and CLARITY (10x) GRADING SCALE. Rows include color grades (CL, NC, FT, VLT, LT) and clarity grades (FL, IF, VVS, VS, SI, I).



LASERSCRIBE SM

Sample Image Used



September 1, 2022
IGI Report No LG544281484
ROUND BRILLIANT
6.28 - 6.31 X 3.95 MM
Carat Weight 1.00 CARAT
Color Grade D
Clarity Grade SI 2
Cut Grade VERY GOOD
Depth 62.7%
Table 57.5%
Girdle Medium To Slightly Thick (Faceted)
Culet Pointed
Polish EXCELLENT
Symmetry EXCELLENT
Fluorescence NONE
Inscription(s) LABGROWN IGI LG544281484
Comments: As Grown - No indication of post-growth treatment. This Laboratory Grown Diamond was created by High Pressure High Temperature (HPHT) growth process. Type II