



ELECTRONIC COPY

LABORATORY GROWN DIAMOND REPORT

September 6, 2022
IGI Report Number LG544282148
Description LABORATORY GROWN DIAMOND
Shape and Cutting Style CUT CORNERED RECTANGULAR MODIFIED BRILLIANT
Measurements 6.92 X 4.82 X 3.42 MM

GRADING RESULTS

Carat Weight 1.01 CARAT
Color Grade D
Clarity Grade VS 1

ADDITIONAL GRADING INFORMATION

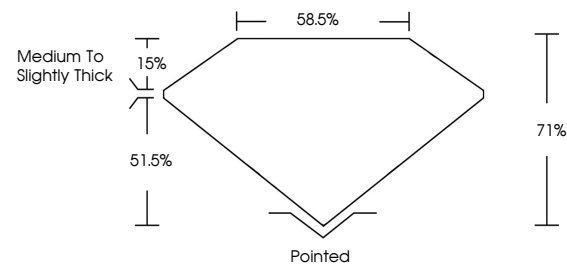
Polish EXCELLENT
Symmetry EXCELLENT
Fluorescence NONE

Inscription(s) LABGROWN IGI LG544282148

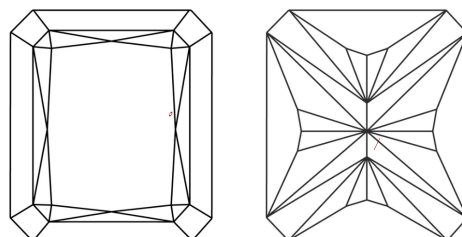
Comments: As Grown - No indication of post-growth treatment. This Laboratory Grown Diamond was created by High Pressure High Temperature (HPHT) growth process. Type II

LG544282148

PROPORTIONS



CLARITY CHARACTERISTICS

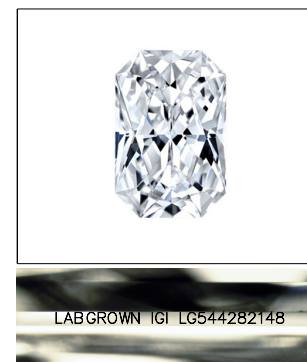


KEY TO SYMBOLS

Red symbols indicate internal characteristics. Green symbols indicate external characteristics.

GRADING SCALES

Table with 2 columns: COLOR GRADING SCALE and CLARITY (10x) GRADING SCALE. Rows include color grades (CL, NC, FT, VLT, LT) and clarity grades (FL, IF, VVS, VS, SI, I).



LASERSCRIBE SM Sample Image Used

September 6, 2022
IGI Report Number LG544282148
Description LABORATORY GROWN DIAMOND
Shape and Cutting Style CUT CORNERED RECTANGULAR MODIFIED BRILLIANT
Measurements 6.92 X 4.82 X 3.42 MM

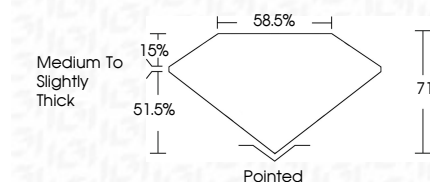
GRADING RESULTS

Carat Weight 1.01 CARAT
Color Grade D
Clarity Grade VS 1

ADDITIONAL GRADING INFORMATION

Polish EXCELLENT
Symmetry EXCELLENT
Fluorescence NONE
Inscription(s) LABGROWN IGI LG544282148

Comments: As Grown - No indication of post-growth treatment. This Laboratory Grown Diamond was created by High Pressure High Temperature (HPHT) growth process. Type II



Summary of report details including date, report number, description, measurements, grading results, and additional information.

