



**INTERNATIONAL
GEMOLOGICAL
INSTITUTE**

ELECTRONIC COPY

**LABORATORY GROWN
DIAMOND REPORT**

**IGI LABORATORY GROWN
DIAMOND ID REPORT**

September 26, 2022

IGI Report Number **LG544285441**

PEAR BRILLIANT

8.82 X 5.42 X 3.37 MM

Carat Weight	0.91 CARAT
Color Grade	D
Clarity Grade	VVS 2
Cut Grade	VERY GOOD
Polish	EXCELLENT
Symmetry	EXCELLENT
Fluorescence	NONE
Inscription(s)	LABGROWN IGI LG544285441

Comments: As Grown - No indication of post-growth treatment.
This Laboratory Grown Diamond was created by High Pressure High Temperature (HPHT) growth process.
Type II

LABORATORY GROWN DIAMOND REPORT

IGI LABORATORY GROWN DIAMOND IDENTIFICATION REPORT

September 26, 2022

IGI Report Number **LG544285441**

Description **LABORATORY GROWN DIAMOND**

Shape and Cutting Style **PEAR BRILLIANT**

Measurements **8.82 X 5.42 X 3.37 MM**

GRADING RESULTS

Carat Weight **0.91 CARAT**

Color Grade **D**

Clarity Grade **VVS 2**

Cut Grade **VERY GOOD**

ADDITIONAL GRADING INFORMATION

Polish **EXCELLENT**

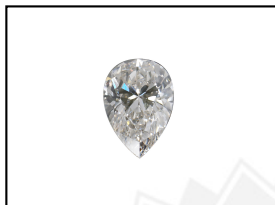
Symmetry **EXCELLENT**

Fluorescence **NONE**

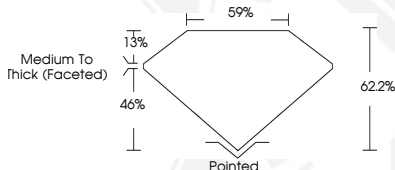
Inscription(s) **LABGROWN IGI LG544285441**

Comments: As Grown - No indication of post-growth treatment.
This Laboratory Grown Diamond was created by High Pressure High Temperature (HPHT) growth process.
Type II

LG544285441



LASERSCRIBESM
Sample Images Used



**IGI LABORATORY GROWN
DIAMOND ID REPORT**

September 26, 2022

IGI Report Number **LG544285441**

PEAR BRILLIANT

8.82 X 5.42 X 3.37 MM

Carat Weight	0.91 CARAT
Color Grade	D
Clarity Grade	VVS 2
Cut Grade	VERY GOOD
Polish	EXCELLENT
Symmetry	EXCELLENT
Fluorescence	NONE
Inscription(s)	LABGROWN IGI LG544285441

Comments: As Grown - No indication of post-growth treatment.
This Laboratory Grown Diamond was created by High Pressure High Temperature (HPHT) growth process.
Type II

THIS DOCUMENT WAS PRODUCED WITH THE FOLLOWING SECURITY MEASURES: SPECIAL DOCUMENT PAPER, INK SCREENS, WATERMARK, BACKGROUND DESIGN, HOLOGRAM AND OTHER SECURITY FEATURES NOT LISTED AND DO EXCEED DOCUMENT SECURITY INDUSTRY GUIDELINES.

For terms & conditions and to verify this report, please visit www.igi.org