



ELECTRONIC COPY

LABORATORY GROWN DIAMOND REPORT

September 13, 2022
IGI Report Number LG546215326
Description LABORATORY GROWN DIAMOND
Shape and Cutting Style CUT CORNERED RECTANGULAR MODIFIED BRILLIANT
Measurements 6.89 X 5.04 X 3.30 MM

GRADING RESULTS

Carat Weight 1.00 CARAT
Color Grade D
Clarity Grade VS 2

ADDITIONAL GRADING INFORMATION

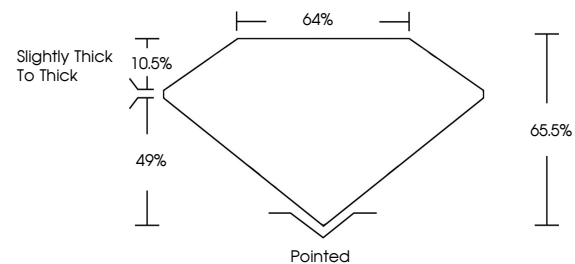
Polish EXCELLENT
Symmetry EXCELLENT
Fluorescence NONE

Inscription(s) LABGROWN IGI LG546215326

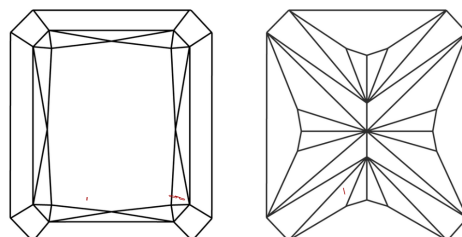
Comments: As Grown - No indication of post-growth treatment. This Laboratory Grown Diamond was created by High Pressure High Temperature (HPHT) growth process. Type II

LG546215326

PROPORTIONS



CLARITY CHARACTERISTICS

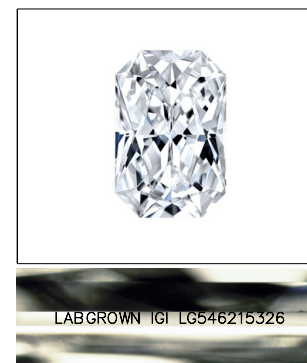


KEY TO SYMBOLS

Red symbols indicate internal characteristics. Green symbols indicate external characteristics.

GRADING SCALES

Table with 5 columns for Color Grading Scale (CL, NC, FT, VLT, LT) and 5 columns for Clarity (10x) Grading Scale (FL, IF, VVS, VS, SI, I). Includes sub-labels like 'COLORLESS D-F', 'NEAR COLORLESS G-J', etc.

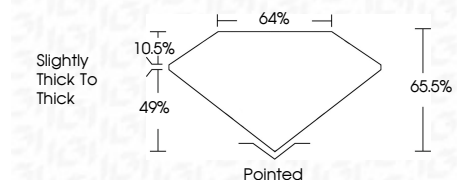


LASERSCRIBE SM Sample Image Used

September 13, 2022
IGI Report Number LG546215326
Description LABORATORY GROWN DIAMOND
Shape and Cutting Style CUT CORNERED RECTANGULAR MODIFIED BRILLIANT
Measurements 6.89 X 5.04 X 3.30 MM

GRADING RESULTS

Carat Weight 1.00 CARAT
Color Grade D
Clarity Grade VS 2



ADDITIONAL GRADING INFORMATION

Polish EXCELLENT
Symmetry EXCELLENT
Fluorescence NONE

Inscription(s) LABGROWN IGI LG546215326

Comments: As Grown - No indication of post-growth treatment. This Laboratory Grown Diamond was created by High Pressure High Temperature (HPHT) growth process. Type II



Summary table containing report details: September 13, 2022, IGI Report No. LG546215326, CUT CORNERED RECT. MODIFIED, 6.89 X 5.04 X 3.30 MM, Carat Weight 1.00 CARAT, Color Grade D, Clarity Grade VS 2, Depth 65.5%, Table 64%, Girdle Slightly thick to thick, Culet Pointed, Polish EXCELLENT, Symmetry EXCELLENT, Fluorescence NONE, Inscription(s) LABGROWN IGI LG546215326, Comments: As Grown - No indication of post-growth treatment. The Laboratory Grown Diamond was created by High Pressure High Temperature (HPHT) growth process. Type II