



ELECTRONIC COPY

LABORATORY GROWN DIAMOND REPORT

September 7, 2022

IGI Report Number **LG546217867**

| | |
|-------------|-----------------------------|
| Description | LABORATORY GROWN DIAMOND |
|-------------|-----------------------------|

Shape and Cutting Style **OVAL BRILLIANT**

Measurements 8.99 X 6.35 X 3.96 MM

GRADING RESULTS

Carat Weight 1.41 CARAT

Color Grade GClarity Grade VVS 2

ADDITIONAL GRADING INFORMATION

Polish **EXCELLENT**

Symmetry **EXCELLENT**

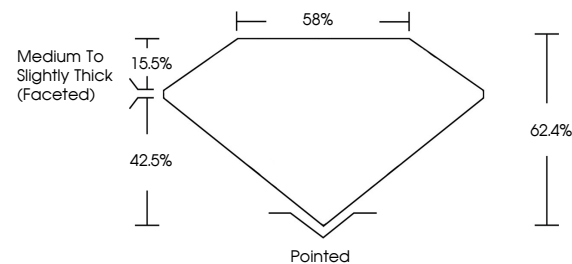
Fluorescence **NONE**

Inscription(s) LABGROWN IGI LG546217867

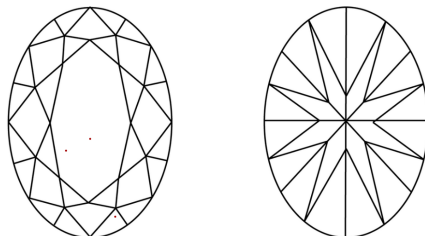
Comments: This Laboratory Grown Diamond was created by Chemical Vapor Deposition (CVD) growth process and may include post-growth treatment. Type IIa

LG546217867

PROPORTIONS



CLARITY CHARACTERISTICS

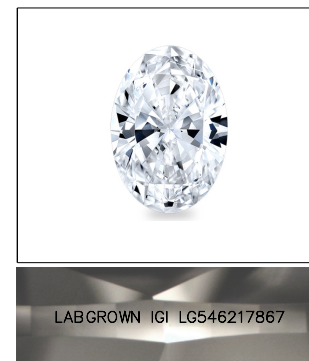


KEY TO SYMBOLS

Red symbols indicate internal characteristics.
Green symbols indicate external characteristics.

GRADING SCALES

| | | | | | | |
|-----------------------------|------------------------------|--------------------|-----------------------------|------------------------|-------------------|-----------|
| COLOR GRADING SCALE | CL | | NC | FT | VL | LT |
| | COLORLESS D-F | NEAR COLORLESS G-J | | FAINT K-M | VERY LIGHT N-R | LIGHT S-Z |
| CLARITY (10x) GRADING SCALE | FL | IF | VVS | VS | SI | I |
| | FLAWLESS INTERNALLY FLAWLESS | | VERY VERY SLIGHTLY INCLUDED | VERY SLIGHTLY INCLUDED | SLIGHTLY INCLUDED | INCLUDED |

LASERSCRIBESM

Sample Image Used



© IGI 2020, International Gemological Institute

FD - 10 20

LABORATORY GROWN DIAMOND REPORT

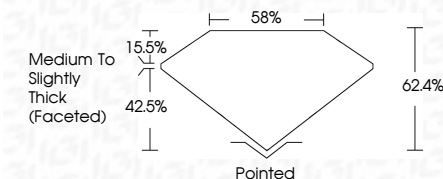
| | |
|-------------------|------------------|
| September 7, 2022 | |
| IGI Report Number | LG546217867 |
| Description | LABORATORY GROWN |

Shape and Cutting Style **OVAL BRILLIANT**

Measurements **8.99 X 6.35 X 3.96 MM**

GRADING RESULTS

Carat Weight **1.41 CARAT**

Color Grade GClarity Grade VVS 2

ADDITIONAL GRADING INFORMATION

Polish **EXCELLENT**

Symmetry **EXCELLENT**

Fluorescence **NONE**

Inscription(s) LABGROWN IGI LG546217867

Comments: This Laboratory Grown Diamond was created by Chemical Vapor Deposition (CVD) growth process and may include post-growth treatment.
Type IIa



| | | |
|----------------------------|--------------------------|--|
| September 7, 2022 | G Report No. LG54627867 | |
| CVAL BRIGHT | 99 X 99 X 6.36 X 3.95 MM | |
| Color | Weight | 1.41 CARAT |
| Color Grade | | G |
| Clarity Grade | | VVS 2 |
| Depth | | 62.4% |
| Table | | 59% |
| Grade | | Medium to Slightly Thick (faceted) |
| Culet | | Pointed |
| Polish | | EXCELLENT |
| Symmetry | | EXCELLENT |
| Fluorescence (incriptions) | | NONE |
| | | LABGROWN IGI LG54627867 |
| Comments: | | |
| | | This Laboratory Grown Diamond was analyzed by a Gemological Institute of America (GIA) Gemologist. The diamond was grown using the Chemical Vapor Deposition (CVD) growth process and may include post-growth treatment. |
| | | Type IIA |