



ELECTRONIC COPY

LABORATORY GROWN DIAMOND REPORT

September 10, 2022
 IGI Report Number **LG546218950**
 Description **LABORATORY GROWN
DIAMOND**
 Shape and Cutting Style **CUSHION BRILLIANT**
 Measurements **8.71 X 8.05 X 5.17 MM**

GRADING RESULTS

Carat Weight **3.01 CARATS**
 Color Grade **E**
 Clarity Grade **SI 1**

ADDITIONAL GRADING INFORMATION

Polish **EXCELLENT**
 Symmetry **EXCELLENT**
 Fluorescence **NONE**

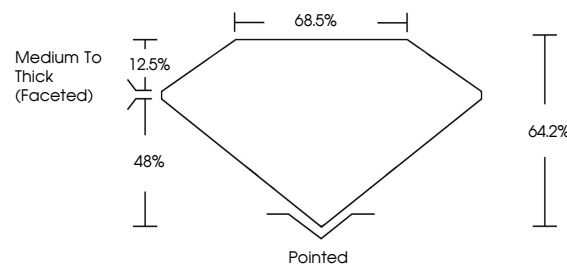
Inscription(s) **LABGROWN IGI LG546218950**

Comments: As Grown - No indication of post-growth treatment.

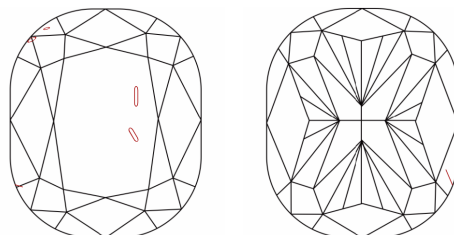
This Laboratory Grown Diamond was created by High Pressure High Temperature (HPHT) growth process. Type II

LG546218950

PROPORTIONS



CLARITY CHARACTERISTICS



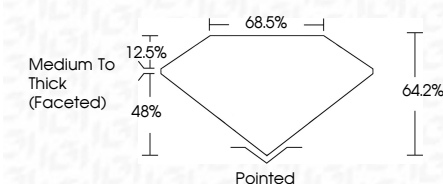
KEY TO SYMBOLS

Red symbols indicate internal characteristics.
 Green symbols indicate external characteristics.

GRADING SCALES

COLOR GRADING SCALE	CL	NC	FT	VLT	LT	
	COLORLESS D-F	NEAR COLORLESS G-J	FAINT K-M	VERY LIGHT N-R	LIGHT S-Z	
CLARITY (10x) GRADING SCALE	FL	IF	VVS	VS	SI	I
	FLAWLESS INTERNALLY FLAWLESS	VERY VERY SLIGHTLY INCLUDED	VERY SLIGHTLY INCLUDED	SLIGHTLY INCLUDED	INCLUDED	

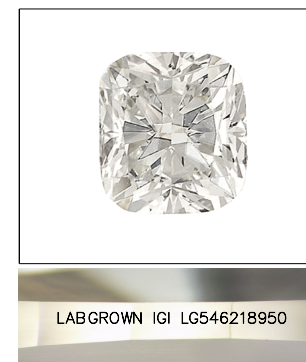
September 10, 2022
 IGI Report Number **LG546218950**
 Description **LABORATORY GROWN
DIAMOND**
 Shape and Cutting Style **CUSHION BRILLIANT**
 Measurements **8.71 X 8.05 X 5.17 MM**
GRADING RESULTS
 Carat Weight **3.01 CARATS**
 Color Grade **E**
 Clarity Grade **SI 1**



ADDITIONAL GRADING INFORMATION

Polish **EXCELLENT**
 Symmetry **EXCELLENT**
 Fluorescence **NONE**
 Inscription(s) **LABGROWN IGI LG546218950**

Comments: As Grown - No indication of post-growth treatment.
 This Laboratory Grown Diamond was created by High Pressure High Temperature (HPHT) growth process. Type II



LABGROWN IGI LG546218950

LASERSCRIBESM

Sample Image Used



September 10, 2022	IGI Report No LG546218950	CUSHION BRILLIANT	8.71 X 8.05 X 5.17 MM	3.01 CARATS	E	SI 1	64.2%	48%	68.5%	Medium To Thick (Faceted)	Pointed	EXCELLENT	EXCELLENT	NONE	LABGROWN IGI LG546218950	Comments: As Grown - No indication of post-growth treatment. The Laboratory Grown Diamond was created by High Pressure High Temperature (HPHT) growth process. Type II
--------------------	---------------------------	-------------------	-----------------------	-------------	---	------	-------	-----	-------	---------------------------	---------	-----------	-----------	------	--------------------------	--