



**ELECTRONIC COPY**

**LABORATORY GROWN DIAMOND REPORT**

September 20, 2022  
 IGI Report Number **LG546223038**  
 Description **LABORATORY GROWN  
DIAMOND**  
 Shape and Cutting Style **ROUND BRILLIANT**  
 Measurements **11.09 - 11.14 X 6.90 MM**

**GRADING RESULTS**

Carat Weight **5.18 CARATS**  
 Color Grade **G**  
 Clarity Grade **SI 2**  
 Cut Grade **IDEAL**

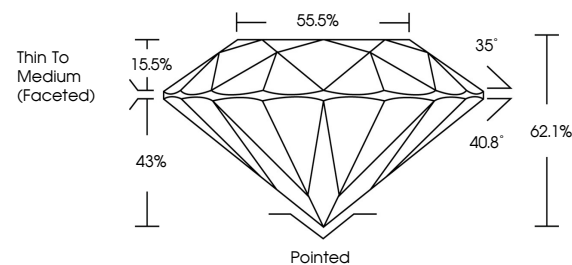
**ADDITIONAL GRADING INFORMATION**

Polish **EXCELLENT**  
 Symmetry **EXCELLENT**  
 Fluorescence **NONE**  
 Inscription(s) **LABGROWN IGI LG546223038**

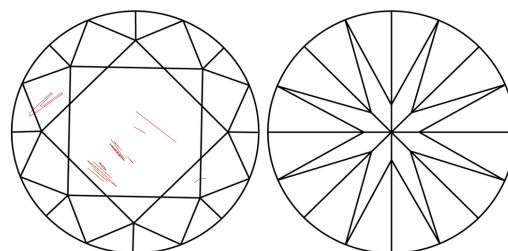
Comments: As Grown - No indication of post-growth treatment.  
 This Laboratory Grown Diamond was created by High Pressure High Temperature (HPHT) growth process.  
 Type II

LG546223038

**PROPORTIONS**



**CLARITY CHARACTERISTICS**



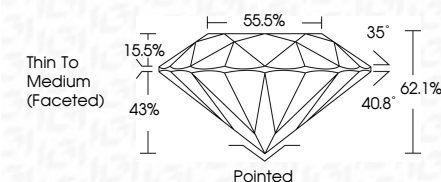
**KEY TO SYMBOLS**

Red symbols indicate internal characteristics.  
 Green symbols indicate external characteristics.

**GRADING SCALES**

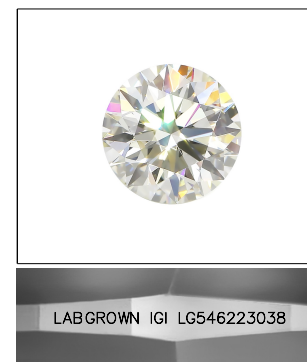
COLOR GRADING SCALE	CL	NC	FT	VLT	LT	
	COLORLESS D-F	NEAR COLORLESS G-J	FAINT K-M	VERY LIGHT N-R	LIGHT S-Z	
CLARITY (10x) GRADING SCALE	FL	IF	VVS	VS	SI	I
	FLAWLESS INTERNALLY FLAWLESS	VERY VERY SLIGHTLY INCLUDED	VERY SLIGHTLY INCLUDED	SLIGHTLY INCLUDED	INCLUDED	

September 20, 2022  
 IGI Report Number **LG546223038**  
 Description **LABORATORY GROWN  
DIAMOND**  
 Shape and Cutting Style **ROUND BRILLIANT**  
 Measurements **11.09 - 11.14 X 6.90 MM**  
**GRADING RESULTS**  
 Carat Weight **5.18 CARATS**  
 Color Grade **G**  
 Clarity Grade **SI 2**  
 Cut Grade **IDEAL**



**ADDITIONAL GRADING INFORMATION**

Polish **EXCELLENT**  
 Symmetry **EXCELLENT**  
 Fluorescence **NONE**  
 Inscription(s) **LABGROWN IGI LG546223038**  
 Comments: As Grown - No indication of post-growth treatment.  
 This Laboratory Grown Diamond was created by High Pressure High Temperature (HPHT) growth process.  
 Type II



**LASERSCRIBE<sup>SM</sup>**

Sample Image Used



**IGI**

September 20, 2022  
 IGI Report No **LG546223038**  
**ROUND BRILLIANT**  
 11.09 - 11.14 X 6.90 MM  
 Carat Weight **5.18 CARATS**  
 Color Grade **G**  
 Clarity Grade **SI 2**  
 Cut Grade **IDEAL**  
 Depth **62.1%**  
 Table **55.5%**  
 Girdle **Thin To Medium (Faceted)**  
 Culet **Pointed**  
 Polish **EXCELLENT**  
 Symmetry **EXCELLENT**  
 Fluorescence **NONE**  
 Inscription(s) **LABGROWN IGI LG546223038**  
**Comments:** As Grown - No indication of post-growth treatment.  
 This Laboratory Grown Diamond was created by High Pressure High Temperature (HPHT) growth process.  
 Type II