



**ELECTRONIC COPY**

## LABORATORY GROWN DIAMOND REPORT

September 16, 2022	
IGI Report Number	LG546230412
Description	LABORATORY GROWN DIAMOND
Shape and Cutting Style	CUT CORNERED RECTANGULAR MODIFIED BRILLIANT
Measurements	8.44 X 5.95 X 3.83 MM

## GRADING RESULTS

Carat Weight	1.76 CARAT
Color Grade	I
Clarity Grade	VS 1

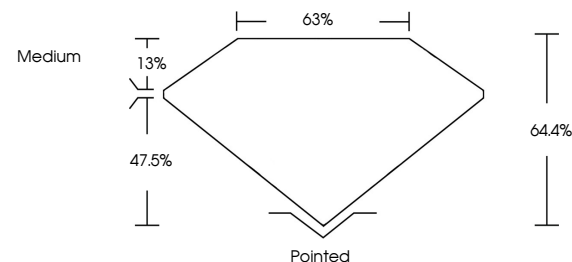
### ADDITIONAL GRADING INFORMATION

Polish	EXCELLENT
Symmetry	EXCELLENT
Fluorescence	NONE

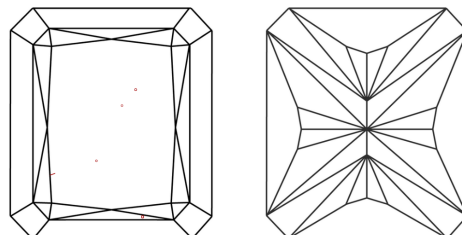
Inscription(s) **LABGROWN IGI LG546230412**  
 Comments: This Laboratory Grown Diamond was created by Chemical Vapor Deposition (CVD) growth process and may include post-growth treatment. Type IIa

LG546230412

## PROPORTIONS



## CLARITY CHARACTERISTICS

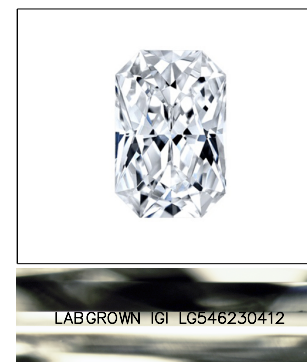


### KEY TO SYMBOLS

Red symbols indicate internal characteristics.  
Green symbols indicate external characteristics.

## GRADING SCALES

COLOR GRADING SCALE	CL		NC	FT	VLT	LT
	COLORLESS D-F		NEAR COLORLESS G-J	FAINT K-M	VERY LIGHT N-R	LIGHT S-Z
CLARITY (10x) GRADING SCALE	FL	IF	VVS	VS	SI	I
	FLAWLESS INTERNALLY FLAWLESS		VERY VERY SLIGHTLY INCLUDED	VERY SLIGHTLY INCLUDED	SLIGHTLY INCLUDED	INCLUDED

LASERSCRIBE<sup>SM</sup>

Sample Image Used



© IGI 2020, International Gemological Institute

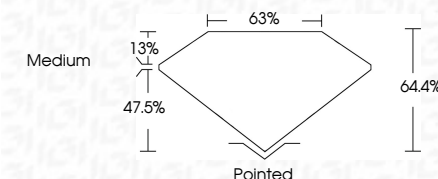
FD - 10 20

LABORATORY GROWN DIAMOND REPORT

September 16, 2022	
IGI Report Number	LG546230412
Description	LABORATORY GROWN DIAMOND
Shape and Cutting Style	CUT CORNERED RECTANGULAR MODIFIED BRILLIANT
Measurements	8.44 X 5.95 X 3.83 MM

## GRADING RESULTS

Carat Weight	1.76 CARAT
Color Grade	I
Clarity Grade	VS 1



### ADDITIONAL GRADING INFORMATION

Polish	EXCELLENT
Symmetry	EXCELLENT
Fluorescence	NONE
Inscription(s)	LABGROWN IGI LG546230412

Inscription(s) LABGROWN IGI LG546230412

Comments: This Laboratory Grown Diamond was created by Chemical Vapor Deposition (CVD) growth process and may include post-growth treatment.  
Type IIa



September 16, 2022	GI REPORTED NO LGS46230412	1.76 CARAT	Color Grade	Clarity Grade	VS 1	Cutlet	Polished	Excellent	None	LARGOVAN LSI LGS46230412
2.01 CT	2.01 CT	1.76 CARAT	Depth	Table	64.6%	Polish	Excellent	Excellent	None	
14.14 X 14.14 X 5.95 X 3.83 MM	14.14 X 14.14 X 5.95 X 3.83 MM	1.76 CARAT	Girdle	Medium	65%	Symmetry	Excellent	Excellent	None	
		1.76 CARAT				Fluorescence				
		1.76 CARAT				Inscriptions(s)				
		1.76 CARAT				Comments:				

This Laboratory Grown Diamond was created by Chemical Vapor Deposition (CVD) growth process and may include post-growth treatment.

Type Ia