



ELECTRONIC COPY

LABORATORY GROWN DIAMOND REPORT

October 3, 2022
IGI Report Number LG547239269
Description LABORATORY GROWN DIAMOND
Shape and Cutting Style ROUND BRILLIANT
Measurements 9.33 - 9.36 X 5.63 MM

GRADING RESULTS

Carat Weight 3.01 CARATS
Color Grade G
Clarity Grade VVS 2
Cut Grade IDEAL

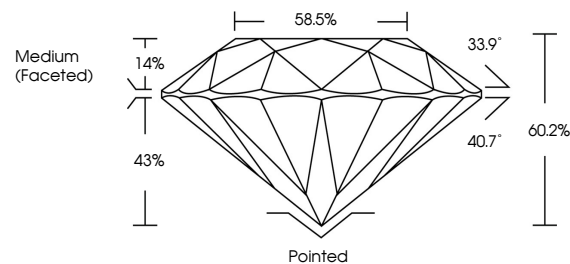
ADDITIONAL GRADING INFORMATION

Polish EXCELLENT
Symmetry EXCELLENT
Fluorescence NONE
Inscription(s) LABGROWN (IGI) LG547239269

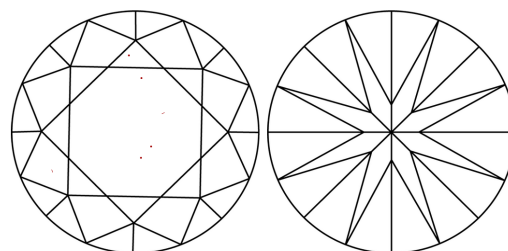
Comments: HEARTS & ARROWS
This Laboratory Grown Diamond was created by Chemical Vapor Deposition (CVD) growth process and may include post-growth treatment.
Type IIa

LG547239269

PROPORTIONS



CLARITY CHARACTERISTICS



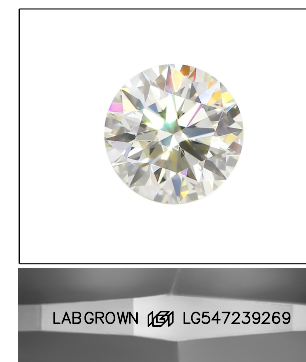
KEY TO SYMBOLS

Red symbols indicate internal characteristics.
Green symbols indicate external characteristics.



GRADING SCALES

Table showing grading scales for Color (CL), Clarity (10x), and other categories with corresponding grades like CL, NC, FT, VLT, LT, etc.

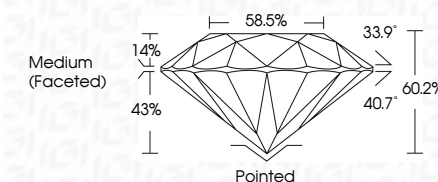


LABGROWN (IGI) LG547239269

LASERSCRIBE SM

Sample Image Used

October 3, 2022
IGI Report Number LG547239269
Description LABORATORY GROWN DIAMOND
Shape and Cutting Style ROUND BRILLIANT
Measurements 9.33 - 9.36 X 5.63 MM
GRADING RESULTS
Carat Weight 3.01 CARATS
Color Grade G
Clarity Grade VVS 2
Cut Grade IDEAL



ADDITIONAL GRADING INFORMATION

Polish EXCELLENT
Symmetry EXCELLENT
Fluorescence NONE
Inscription(s) LABGROWN (IGI) LG547239269

Comments: HEARTS & ARROWS
This Laboratory Grown Diamond was created by Chemical Vapor Deposition (CVD) growth process and may include post-growth treatment.
Type IIa



IGI

Summary table of diamond specifications: Date, Report No, Shape, Carat Weight, Color Grade, Clarity Grade, Cut Grade, Depth, Table, Girdle, Inscription(s), and Comments.