



ELECTRONIC COPY

LABORATORY GROWN DIAMOND REPORT

October 17, 2022
IGI Report Number LG547239414
Description LABORATORY GROWN DIAMOND
Shape and Cutting Style ROUND BRILLIANT
Measurements 8.74 - 8.80 X 5.49 MM

GRADING RESULTS

Carat Weight 2.60 CARATS
Color Grade G
Clarity Grade VVS 2
Cut Grade IDEAL

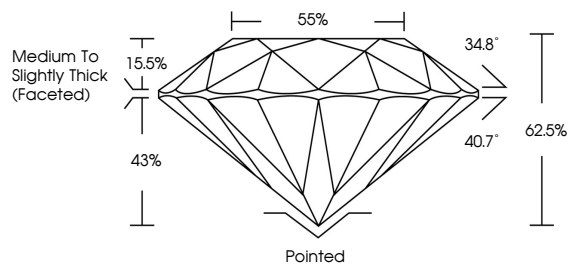
ADDITIONAL GRADING INFORMATION

Polish EXCELLENT
Symmetry EXCELLENT
Fluorescence NONE
Inscription(s) LABGROWN (IGI) LG547239414

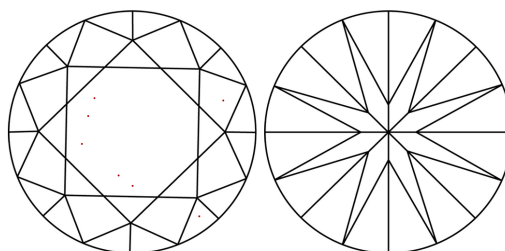
Comments: HEARTS & ARROWS
This Laboratory Grown Diamond was created by Chemical Vapor Deposition (CVD) growth process and may include post-growth treatment.
Type IIa

LG547239414

PROPORTIONS



CLARITY CHARACTERISTICS



KEY TO SYMBOLS

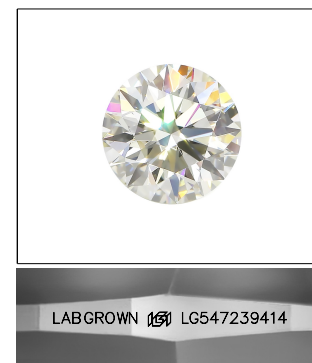
Red symbols indicate internal characteristics.
Green symbols indicate external characteristics.



www.igi.org

GRADING SCALES

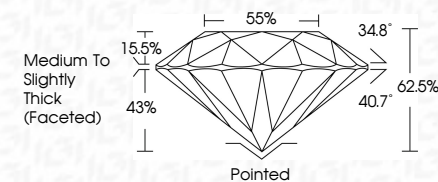
Table with 5 columns for Color Grading Scale (CL, NC, FT, VLT, LT) and 5 columns for Clarity (10x) Grading Scale (FL, IF, VVS, VS, SI, I).



LASERSCRIBE SM

Sample Image Used

October 17, 2022
IGI Report Number LG547239414
Description LABORATORY GROWN DIAMOND
Shape and Cutting Style ROUND BRILLIANT
Measurements 8.74 - 8.80 X 5.49 MM
GRADING RESULTS
Carat Weight 2.60 CARATS
Color Grade G
Clarity Grade VVS 2
Cut Grade IDEAL



ADDITIONAL GRADING INFORMATION

Polish EXCELLENT
Symmetry EXCELLENT
Fluorescence NONE
Inscription(s) LABGROWN (IGI) LG547239414

Comments: HEARTS & ARROWS
This Laboratory Grown Diamond was created by Chemical Vapor Deposition (CVD) growth process and may include post-growth treatment.
Type IIa



Summary table of report details: IGI Report No. LG547239414, ROUND BRILLIANT, 8.74 - 8.80 X 5.49 MM, 2.60 CARATS, G, VVS 2, IDEAL, 62.5%, 55%, Medium To Slightly Thick (Faceted), Pointed, EXCELLENT, EXCELLENT, NONE, LABGROWN (IGI) LG547239414.

Comments: HEARTS & ARROWS
This Laboratory Grown Diamond was created by Chemical Vapor Deposition (CVD) growth process and may include post-growth treatment.
Type IIa