



**INTERNATIONAL  
GEMOLOGICAL  
INSTITUTE**

**ELECTRONIC COPY**

**LABORATORY GROWN  
DIAMOND REPORT**

**IGI LABORATORY GROWN  
DIAMOND ID REPORT**

October 6, 2022  
IGI Report Number **LG547242548**

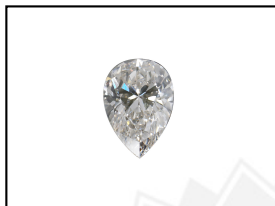
**LABORATORY GROWN DIAMOND REPORT**

**LG547242548**

**PEAR BRILLIANT**  
**8.08 X 4.97 X 3.03 MM**  
Carat Weight 0.68 CARAT  
Color Grade E  
Clarity Grade VVS 1  
Cut Grade VERY GOOD  
Polish EXCELLENT  
Symmetry VERY GOOD  
Fluorescence NONE  
Inscription(s) LABGROWN IGI  
LG547242548

**IGI LABORATORY GROWN DIAMOND IDENTIFICATION REPORT**

October 6, 2022  
IGI Report Number LG547242548  
Description LABORATORY GROWN DIAMOND  
Shape and Cutting Style PEAR BRILLIANT  
Measurements 8.08 X 4.97 X 3.03 MM



Comments: This Laboratory Grown Diamond was created by Chemical Vapor Deposition (CVD) growth process and may include post-growth treatment.  
Type IIa

**GRADING RESULTS**

Carat Weight 0.68 CARAT  
Color Grade E  
Clarity Grade VVS 1  
Cut Grade VERY GOOD

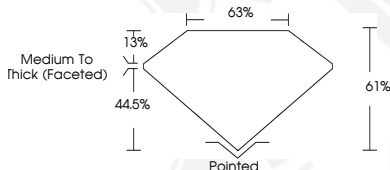
**LASERSCRIBE<sup>SM</sup>**  
Sample Images Used



**ADDITIONAL GRADING INFORMATION**

Polish EXCELLENT  
Symmetry VERY GOOD  
Fluorescence NONE  
Inscription(s) LABGROWN IGI LG547242548

Comments: This Laboratory Grown Diamond was created by Chemical Vapor Deposition (CVD) growth process and may include post-growth treatment.  
Type IIa



**IGI LABORATORY GROWN  
DIAMOND ID REPORT**

October 6, 2022  
IGI Report Number **LG547242548**

**PEAR BRILLIANT**  
**8.08 X 4.97 X 3.03 MM**  
Carat Weight 0.68 CARAT  
Color Grade E  
Clarity Grade VVS 1  
Cut Grade VERY GOOD  
Polish EXCELLENT  
Symmetry VERY GOOD  
Fluorescence NONE  
Inscription(s) LABGROWN IGI  
LG547242548

Comments: This Laboratory Grown Diamond was created by Chemical Vapor Deposition (CVD) growth process and may include post-growth treatment.  
Type IIa

THIS DOCUMENT WAS PRODUCED WITH THE FOLLOWING SECURITY MEASURES: SPECIAL DOCUMENT PAPER, INK SCREENS, WATERMARK, BACKGROUND DESIGN, HOLOGRAM AND OTHER SECURITY FEATURES NOT LISTED AND DO EXCEED DOCUMENT SECURITY INDUSTRY GUIDELINES.

For terms & conditions and to verify this report, please visit [www.igi.org](http://www.igi.org)