



**INTERNATIONAL  
GEMOLOGICAL  
INSTITUTE**

**ELECTRONIC COPY**

**LABORATORY GROWN  
DIAMOND REPORT**

**IGI LABORATORY GROWN  
DIAMOND ID REPORT**

November 15, 2022  
IGI Report Number **LG547250849**

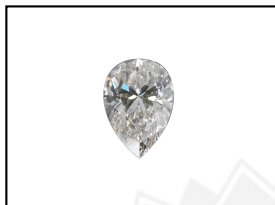
**LABORATORY GROWN DIAMOND REPORT**

**LG547250849**

**PEAR BRILLIANT**  
**6.93 X 4.41 X 2.79 MM**  
Carat Weight 0.51 CARAT  
Color Grade E  
Clarity Grade VVS 2  
Polish VERY GOOD  
Symmetry EXCELLENT  
Fluorescence NONE  
Inscription(s) LABGROWN IGI  
LG547250849

**IGI LABORATORY GROWN DIAMOND IDENTIFICATION REPORT**

November 15, 2022  
IGI Report Number LG547250849  
Description LABORATORY GROWN DIAMOND  
Shape and Cutting Style PEAR BRILLIANT  
Measurements 6.93 X 4.41 X 2.79 MM



Comments: This Laboratory Grown Diamond was created by Chemical Vapor Deposition (CVD) growth process and may include post-growth treatment. Type IIa

**GRADING RESULTS**

Carat Weight 0.51 CARAT  
Color Grade E  
Clarity Grade VVS 2

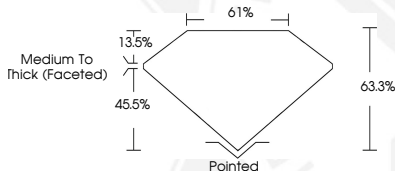
**LASERSCRIBE<sup>SM</sup>**  
Sample Images Used



**ADDITIONAL GRADING INFORMATION**

Polish VERY GOOD  
Symmetry EXCELLENT  
Fluorescence NONE  
Inscription(s) LABGROWN IGI LG547250849

Comments: This Laboratory Grown Diamond was created by Chemical Vapor Deposition (CVD) growth process and may include post-growth treatment. Type IIa



**IGI LABORATORY GROWN  
DIAMOND ID REPORT**

November 15, 2022  
IGI Report Number **LG547250849**

**PEAR BRILLIANT**  
**6.93 X 4.41 X 2.79 MM**  
Carat Weight 0.51 CARAT  
Color Grade E  
Clarity Grade VVS 2  
Polish VERY GOOD  
Symmetry EXCELLENT  
Fluorescence NONE  
Inscription(s) LABGROWN IGI  
LG547250849

Comments: This Laboratory Grown Diamond was created by Chemical Vapor Deposition (CVD) growth process and may include post-growth treatment. Type IIa

THIS DOCUMENT WAS PRODUCED WITH THE FOLLOWING SECURITY MEASURES: SPECIAL DOCUMENT PAPER, INK SCREENS, WATERMARK, BACKGROUND DESIGN, HOLOGRAM AND OTHER SECURITY FEATURES NOT LISTED AND DO EXCEED DOCUMENT SECURITY INDUSTRY GUIDELINES.

For terms & conditions and to verify this report, please visit [www.igi.org](http://www.igi.org)