



**INTERNATIONAL  
GEMOLOGICAL  
INSTITUTE**

**ELECTRONIC COPY**

**LABORATORY GROWN  
DIAMOND REPORT**

**IGI LABORATORY GROWN  
DIAMOND ID REPORT**

November 14, 2022

IGI Report Number **LG547251048**

**PEAR BRILLIANT**

**6.71 X 4.36 X 2.87 MM**

|                |                             |
|----------------|-----------------------------|
| Carat Weight   | 0.51 CARAT                  |
| Color Grade    | D                           |
| Clarity Grade  | VVS 2                       |
| Polish         | EXCELLENT                   |
| Symmetry       | EXCELLENT                   |
| Fluorescence   | NONE                        |
| Inscription(s) | LABGROWN IGI<br>LG547251048 |

Comments: This Laboratory Grown Diamond was created by Chemical Vapor Deposition (CVD) growth process and may include post-growth treatment. Type IIa

**LABORATORY GROWN DIAMOND REPORT**

**IGI LABORATORY GROWN DIAMOND IDENTIFICATION REPORT**

November 14, 2022

IGI Report Number **LG547251048**

Description **LABORATORY GROWN DIAMOND**

Shape and Cutting Style **PEAR BRILLIANT**

Measurements **6.71 X 4.36 X 2.87 MM**

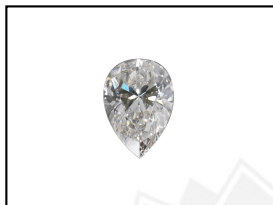
**GRADING RESULTS**

|               |            |
|---------------|------------|
| Carat Weight  | 0.51 CARAT |
| Color Grade   | D          |
| Clarity Grade | VVS 2      |

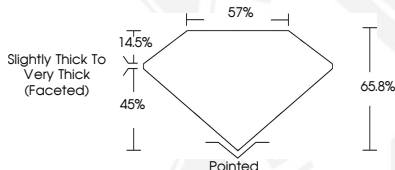
**ADDITIONAL GRADING INFORMATION**

|                |                          |
|----------------|--------------------------|
| Polish         | EXCELLENT                |
| Symmetry       | EXCELLENT                |
| Fluorescence   | NONE                     |
| Inscription(s) | LABGROWN IGI LG547251048 |

Comments: This Laboratory Grown Diamond was created by Chemical Vapor Deposition (CVD) growth process and may include post-growth treatment. Type IIa



**LASERSCRIBE<sup>SM</sup>**  
Sample Images Used



THIS DOCUMENT WAS PRODUCED WITH THE FOLLOWING SECURITY MEASURES: SPECIAL DOCUMENT PAPER, INK SCREENS, WATERMARK, BACKGROUND DESIGN, HOLOGRAM AND OTHER SECURITY FEATURES NOT LISTED AND DO EXCEED DOCUMENT SECURITY INDUSTRY GUIDELINES.

For terms & conditions and to verify this report, please visit [www.igi.org](http://www.igi.org)

**IGI LABORATORY GROWN  
DIAMOND ID REPORT**

November 14, 2022

IGI Report Number **LG547251048**

**PEAR BRILLIANT**

**6.71 X 4.36 X 2.87 MM**

|                |                             |
|----------------|-----------------------------|
| Carat Weight   | 0.51 CARAT                  |
| Color Grade    | D                           |
| Clarity Grade  | VVS 2                       |
| Polish         | EXCELLENT                   |
| Symmetry       | EXCELLENT                   |
| Fluorescence   | NONE                        |
| Inscription(s) | LABGROWN IGI<br>LG547251048 |

Comments: This Laboratory Grown Diamond was created by Chemical Vapor Deposition (CVD) growth process and may include post-growth treatment. Type IIa