



**INTERNATIONAL  
GEMOLOGICAL  
INSTITUTE**

**LABORATORY GROWN DIAMOND REPORT**

**IGI LABORATORY GROWN DIAMOND IDENTIFICATION REPORT**

October 3, 2022  
 IGI Report Number LG547270156  
 Description LABORATORY GROWN DIAMOND  
 Shape and Cutting Style OVAL BRILLIANT  
 Measurements 6.51 X 4.58 X 3.01 MM

**GRADING RESULTS**

Carat Weight 0.58 CARAT  
 Color Grade FANCY VIVID YELLOW  
 Clarity Grade VS 2

**ADDITIONAL GRADING INFORMATION**

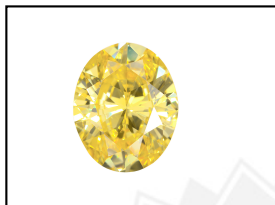
Polish VERY GOOD  
 Symmetry VERY GOOD  
 Fluorescence NONE  
 Inscription(s) LABGROWN IGI LG547270156

Comments: As Grown - No indication of post-growth treatment.  
 This Laboratory Grown Diamond was created by High Pressure High Temperature (HPHT) growth process.

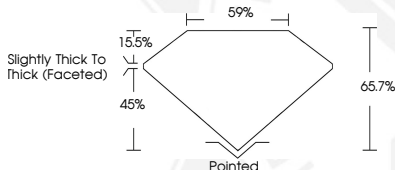
**ELECTRONIC COPY**

**LABORATORY GROWN  
DIAMOND REPORT**

**LG547270156**



**LASERSCRIBE<sup>SM</sup>**  
Sample Images Used



**IGI LABORATORY GROWN  
DIAMOND ID REPORT**

October 3, 2022  
 IGI Report Number **LG547270156**  
**OVAL BRILLIANT**  
**6.51 X 4.58 X 3.01 MM**  
 Carat Weight 0.58 CARAT  
 Color Grade FANCY VIVID  
 YELLOW  
 Clarity Grade VS 2  
 Polish VERY GOOD  
 Symmetry VERY GOOD  
 Fluorescence NONE  
 Inscription(s) LABGROWN IGI  
 LG547270156

Comments: As Grown - No indication of post-growth treatment.  
 This Laboratory Grown Diamond was created by High Pressure High Temperature (HPHT) growth process.

**IGI LABORATORY GROWN  
DIAMOND ID REPORT**

October 3, 2022  
 IGI Report Number **LG547270156**  
**OVAL BRILLIANT**  
**6.51 X 4.58 X 3.01 MM**  
 Carat Weight 0.58 CARAT  
 Color Grade FANCY VIVID  
 YELLOW  
 Clarity Grade VS 2  
 Polish VERY GOOD  
 Symmetry VERY GOOD  
 Fluorescence NONE  
 Inscription(s) LABGROWN IGI  
 LG547270156

Comments: As Grown - No indication of post-growth treatment.  
 This Laboratory Grown Diamond was created by High Pressure High Temperature (HPHT) growth process.

THIS DOCUMENT WAS PRODUCED WITH THE FOLLOWING SECURITY MEASURES: SPECIAL DOCUMENT PAPER, INK SCREENS, WATERMARK, BACKGROUND DESIGN, HOLOGRAM AND OTHER SECURITY FEATURES NOT LISTED AND DO EXCEED DOCUMENT SECURITY INDUSTRY GUIDELINES.

For terms & conditions and to verify this report, please visit [www.igi.org](http://www.igi.org)