



ELECTRONIC COPY

LABORATORY GROWN DIAMOND REPORT

October 11, 2022
 IGI Report Number **LG547271731**
 Description **LABORATORY GROWN
DIAMOND**
 Shape and Cutting Style **HEART BRILLIANT**
 Measurements **6.33 X 7.30 X 3.71 MM**

GRADING RESULTS

Carat Weight **1.18 CARAT**
 Color Grade **FANCY VIVID BLUE**
 Clarity Grade **VS 1**

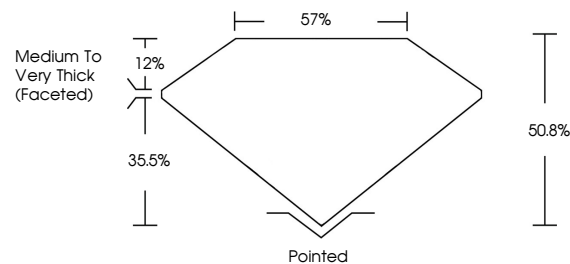
ADDITIONAL GRADING INFORMATION

Polish **EXCELLENT**
 Symmetry **VERY GOOD**
 Fluorescence **NONE**

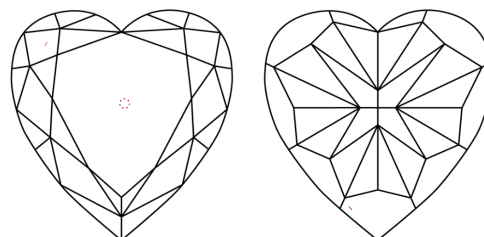
Inscription(s) **LABGROWN IGI LG547271731**
 Comments: This Laboratory Grown Diamond was created by High Pressure High Temperature (HPHT) growth process.
 Indications of post-growth treatment.

LG547271731

PROPORTIONS



CLARITY CHARACTERISTICS



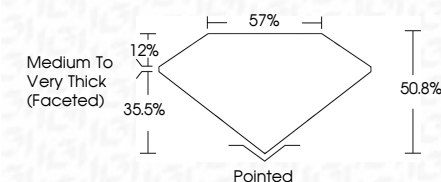
KEY TO SYMBOLS

Red symbols indicate internal characteristics.
 Green symbols indicate external characteristics.

GRADING SCALES

| | | | | | | |
|-----------------------------|------------------------------|-----------------------------|------------------------|-------------------|-----------|----------|
| COLOR GRADING SCALE | CL | NC | FT | VLT | LT | |
| | COLORLESS D-F | NEAR COLORLESS G-J | FAINT K-M | VERY LIGHT N-R | LIGHT S-Z | |
| CLARITY (10x) GRADING SCALE | FL | IF | VVS | VS | SI | I |
| | FLAWLESS INTERNALLY FLAWLESS | VERY VERY SLIGHTLY INCLUDED | VERY SLIGHTLY INCLUDED | SLIGHTLY INCLUDED | INCLUDED | INCLUDED |

October 11, 2022
 IGI Report Number **LG547271731**
 Description **LABORATORY GROWN
DIAMOND**
 Shape and Cutting Style **HEART BRILLIANT**
 Measurements **6.33 X 7.30 X 3.71 MM**
GRADING RESULTS
 Carat Weight **1.18 CARAT**
 Color Grade **FANCY VIVID BLUE**
 Clarity Grade **VS 1**

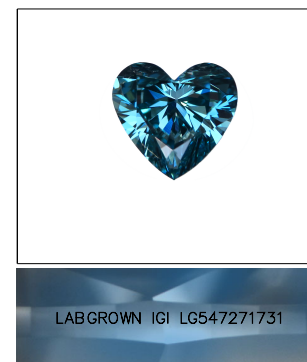


ADDITIONAL GRADING INFORMATION

Polish **EXCELLENT**
 Symmetry **VERY GOOD**
 Fluorescence **NONE**

Inscription(s) **LABGROWN IGI LG547271731**

Comments: This Laboratory Grown Diamond was created by High Pressure High Temperature (HPHT) growth process.
 Indications of post-growth treatment.



LASERSCRIBESM

Sample Image Used



IGI

October 11, 2022
 IGI Report No **LG547271731**
HEART BRILLIANT
 6.33 X 7.30 X 3.71 MM
 Carat Weight **1.18 CARAT**
 Color Grade **FANCY VIVID BLUE**
 Clarity Grade **VS 1**
 Depth **50.8%**
 Table **57%**
 Girdle **Medium to Very Thick (Faceted)**
 Culet **Pointed**
 Polish **EXCELLENT**
 Symmetry **VERY GOOD**
 Fluorescence **NONE**
 Inscription(s) **LABGROWN IGI LG547271731**
 Comments:

This Laboratory Grown Diamond was created by High Pressure High Temperature (HPHT) growth process. Indications of post-growth treatment.