



**INTERNATIONAL
GEMOLOGICAL
INSTITUTE**

LABORATORY GROWN DIAMOND REPORT

IGI LABORATORY GROWN DIAMOND IDENTIFICATION REPORT

October 17, 2022
 IGI Report Number LG547274794
 Description LABORATORY GROWN DIAMOND
 Shape and Cutting Style ROUND BRILLIANT
 Measurements 5.25 - 5.28 X 3.28 MM

GRADING RESULTS

Carat Weight 0.56 CARAT
 Color Grade FANCY INTENSE PINK
 Clarity Grade VS 1
 Cut Grade IDEAL

ADDITIONAL GRADING INFORMATION

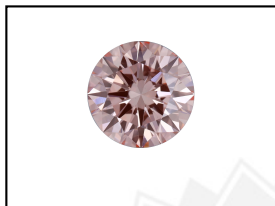
Polish VERY GOOD
 Symmetry EXCELLENT
 Fluorescence SLIGHT
 Inscription(s) LABGROWN IGI LG547274794

Comments: This Laboratory Grown Diamond was created by Chemical Vapor Deposition (CVD) growth process.
 Indications of post-growth treatment.

ELECTRONIC COPY

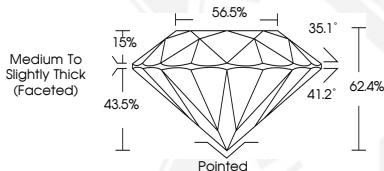
**LABORATORY GROWN
DIAMOND REPORT**

LG547274794



LABGROWN IGI LG547274794

LASERSCRIBESM
Sample Images Used



**IGI LABORATORY GROWN
DIAMOND ID REPORT**

October 17, 2022
 IGI Report Number LG547274794
ROUND BRILLIANT
5.25 - 5.28 X 3.28 MM
 Carat Weight 0.56 CARAT
 Color Grade FANCY INTENSE PINK
 Clarity Grade VS 1
 Cut Grade IDEAL
 Polish VERY GOOD
 Symmetry EXCELLENT
 Fluorescence SLIGHT
 Inscription(s) LABGROWN IGI LG547274794

Comments: This Laboratory Grown Diamond was created by Chemical Vapor Deposition (CVD) growth process.
 Indications of post-growth treatment.

**IGI LABORATORY GROWN
DIAMOND ID REPORT**

October 17, 2022
 IGI Report Number LG547274794
ROUND BRILLIANT
5.25 - 5.28 X 3.28 MM
 Carat Weight 0.56 CARAT
 Color Grade FANCY INTENSE PINK
 Clarity Grade VS 1
 Cut Grade IDEAL
 Polish VERY GOOD
 Symmetry EXCELLENT
 Fluorescence SLIGHT
 Inscription(s) LABGROWN IGI LG547274794

Comments: This Laboratory Grown Diamond was created by Chemical Vapor Deposition (CVD) growth process.
 Indications of post-growth treatment.

THIS DOCUMENT WAS PRODUCED WITH THE FOLLOWING SECURITY MEASURES: SPECIAL DOCUMENT PAPER, INK SCREENS, WATERMARK, BACKGROUND DESIGN, HOLOGRAM AND OTHER SECURITY FEATURES NOT LISTED AND DO EXCEED DOCUMENT SECURITY INDUSTRY GUIDELINES.

For terms & conditions and to verify this report, please visit www.igi.org