



**INTERNATIONAL  
GEMOLOGICAL  
INSTITUTE**

**ELECTRONIC COPY**

**LABORATORY GROWN  
DIAMOND REPORT**

**IGI LABORATORY GROWN  
DIAMOND ID REPORT**

October 15, 2022  
IGI Report Number **LG547274871**

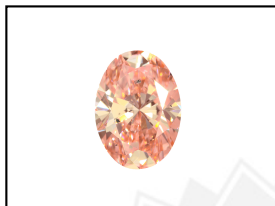
**LABORATORY GROWN DIAMOND REPORT**

**LG547274871**

**OVAL BRILLIANT**  
**6.01 X 4.09 X 2.60 MM**  
Carat Weight 0.42 CARAT  
Color Grade FANCY VIVID PINK  
Clarity Grade SI 1  
Polish GOOD  
Symmetry VERY GOOD  
Fluorescence SLIGHT  
Inscription(s) LABGROWN IGI  
LG547274871

**IGI LABORATORY GROWN DIAMOND IDENTIFICATION REPORT**

October 15, 2022  
IGI Report Number LG547274871  
Description LABORATORY GROWN DIAMOND  
Shape and Cutting Style OVAL BRILLIANT  
Measurements 6.01 X 4.09 X 2.60 MM



Comments: This Laboratory Grown Diamond was created by High Pressure High Temperature (HPHT) growth process. Indications of post-growth treatment.

**GRADING RESULTS**

Carat Weight 0.42 CARAT  
Color Grade FANCY VIVID PINK  
Clarity Grade SI 1



**ADDITIONAL GRADING INFORMATION**

Polish GOOD  
Symmetry VERY GOOD  
Fluorescence SLIGHT  
Inscription(s) LABGROWN IGI LG547274871

**LASERSCRIBE<sup>SM</sup>**  
Sample Images Used

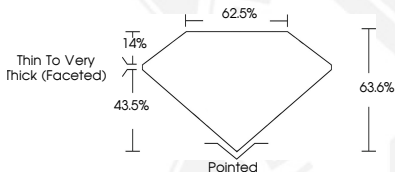


Comments: This Laboratory Grown Diamond was created by High Pressure High Temperature (HPHT) growth process. Indications of post-growth treatment.

**IGI LABORATORY GROWN  
DIAMOND ID REPORT**

October 15, 2022  
IGI Report Number **LG547274871**

**OVAL BRILLIANT**  
**6.01 X 4.09 X 2.60 MM**  
Carat Weight 0.42 CARAT  
Color Grade FANCY VIVID PINK  
Clarity Grade SI 1  
Polish GOOD  
Symmetry VERY GOOD  
Fluorescence SLIGHT  
Inscription(s) LABGROWN IGI  
LG547274871



THIS DOCUMENT WAS PRODUCED WITH THE FOLLOWING SECURITY MEASURES: SPECIAL DOCUMENT PAPER, INK SCREENS, WATERMARK, BACKGROUND DESIGN, HOLOGRAM AND OTHER SECURITY FEATURES NOT LISTED AND DO EXCEED DOCUMENT SECURITY INDUSTRY GUIDELINES.

For terms & conditions and to verify this report, please visit [www.igi.org](http://www.igi.org)

Comments: This Laboratory Grown Diamond was created by High Pressure High Temperature (HPHT) growth process. Indications of post-growth treatment.