



# INTERNATIONAL GEMOLOGICAL INSTITUTE

ELECTRONIC COPY

## LABORATORY GROWN DIAMOND REPORT

LG547274900

### IGI LABORATORY GROWN DIAMOND ID REPORT

October 15, 2022  
IGI Report Number **LG547274900**  
**OVAL BRILLIANT**  
**5.66 X 4.08 X 2.51 MM**  
Carat Weight 0.39 CARAT  
Color Grade FANCY INTENSE PINK  
Clarity Grade VS 1  
Polish VERY GOOD  
Symmetry GOOD  
Fluorescence SLIGHT  
Inscription(s) LABGROWN IGI  
LG547274900

Comments: This Laboratory Grown Diamond was created by High Pressure High Temperature (HPHT) growth process. Indications of post-growth treatment.

## LABORATORY GROWN DIAMOND REPORT

### IGI LABORATORY GROWN DIAMOND IDENTIFICATION REPORT

October 15, 2022  
IGI Report Number LG547274900  
Description LABORATORY GROWN DIAMOND  
Shape and Cutting Style OVAL BRILLIANT  
Measurements 5.66 X 4.08 X 2.51 MM

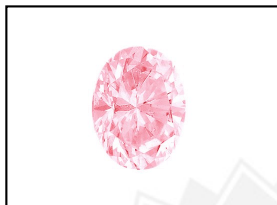
### GRADING RESULTS

Carat Weight 0.39 CARAT  
Color Grade FANCY INTENSE PINK  
Clarity Grade VS 1

### ADDITIONAL GRADING INFORMATION

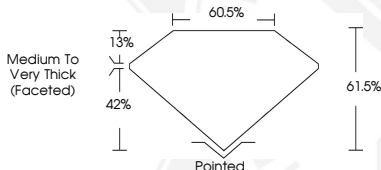
Polish VERY GOOD  
Symmetry GOOD  
Fluorescence SLIGHT  
Inscription(s) LABGROWN IGI LG547274900

Comments: This Laboratory Grown Diamond was created by High Pressure High Temperature (HPHT) growth process. Indications of post-growth treatment.



LABGROWN IGI LG547274900

**LASERSCRIBE<sup>SM</sup>**  
Sample Images Used



### IGI LABORATORY GROWN DIAMOND ID REPORT

October 15, 2022  
IGI Report Number **LG547274900**  
**OVAL BRILLIANT**  
**5.66 X 4.08 X 2.51 MM**  
Carat Weight 0.39 CARAT  
Color Grade FANCY INTENSE PINK  
Clarity Grade VS 1  
Polish VERY GOOD  
Symmetry GOOD  
Fluorescence SLIGHT  
Inscription(s) LABGROWN IGI  
LG547274900

Comments: This Laboratory Grown Diamond was created by High Pressure High Temperature (HPHT) growth process. Indications of post-growth treatment.



THIS DOCUMENT WAS PRODUCED WITH THE FOLLOWING SECURITY MEASURES: SPECIAL DOCUMENT PAPER, INK SCREENS, WATERMARK, BACKGROUND DESIGN, HOLOGRAM AND OTHER SECURITY FEATURES NOT LISTED AND DO EXCEED DOCUMENT SECURITY INDUSTRY GUIDELINES.

For terms & conditions and to verify this report, please visit [www.igi.org](http://www.igi.org)