



**INTERNATIONAL  
GEMOLOGICAL  
INSTITUTE**

**ELECTRONIC COPY**

**LABORATORY GROWN  
DIAMOND REPORT**

**IGI LABORATORY GROWN  
DIAMOND ID REPORT**

October 15, 2022  
IGI Report Number **LG547274913**

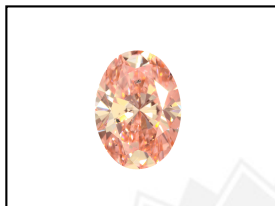
**LABORATORY GROWN DIAMOND REPORT**

**LG547274913**

**OVAL BRILLIANT**  
**6.31 X 4.38 X 2.64 MM**  
Carat Weight 0.46 CARAT  
Color Grade FANCY VIVID PINK  
Clarity Grade VVS 2  
Polish EXCELLENT  
Symmetry VERY GOOD  
Fluorescence SLIGHT  
Inscription(s) LABGROWN IGI  
LG547274913

**IGI LABORATORY GROWN DIAMOND IDENTIFICATION REPORT**

October 15, 2022  
IGI Report Number LG547274913  
Description LABORATORY GROWN DIAMOND  
Shape and Cutting Style OVAL BRILLIANT  
Measurements 6.31 X 4.38 X 2.64 MM



Comments: This Laboratory Grown Diamond was created by High Pressure High Temperature (HPHT) growth process. Indications of post-growth treatment.

**GRADING RESULTS**

Carat Weight 0.46 CARAT  
Color Grade FANCY VIVID PINK  
Clarity Grade VVS 2



**ADDITIONAL GRADING INFORMATION**

Polish EXCELLENT  
Symmetry VERY GOOD  
Fluorescence SLIGHT  
Inscription(s) LABGROWN IGI LG547274913

**LASERSCRIBE<sup>SM</sup>**  
Sample Images Used



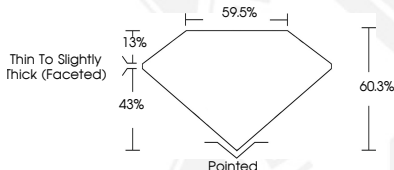
Comments: This Laboratory Grown Diamond was created by High Pressure High Temperature (HPHT) growth process. Indications of post-growth treatment.

**IGI LABORATORY GROWN  
DIAMOND ID REPORT**

October 15, 2022  
IGI Report Number **LG547274913**

**OVAL BRILLIANT**  
**6.31 X 4.38 X 2.64 MM**  
Carat Weight 0.46 CARAT  
Color Grade FANCY VIVID PINK  
Clarity Grade VVS 2  
Polish EXCELLENT  
Symmetry VERY GOOD  
Fluorescence SLIGHT  
Inscription(s) LABGROWN IGI  
LG547274913

Comments: This Laboratory Grown Diamond was created by High Pressure High Temperature (HPHT) growth process. Indications of post-growth treatment.



THIS DOCUMENT WAS PRODUCED WITH THE FOLLOWING SECURITY MEASURES: SPECIAL DOCUMENT PAPER, INK SCREENS, WATERMARK, BACKGROUND DESIGN, HOLOGRAM AND OTHER SECURITY FEATURES NOT LISTED AND DO EXCEED DOCUMENT SECURITY INDUSTRY GUIDELINES.

For terms & conditions and to verify this report, please visit [www.igi.org](http://www.igi.org)