



**INTERNATIONAL
GEMOLOGICAL
INSTITUTE**

LABORATORY GROWN DIAMOND REPORT

IGI LABORATORY GROWN DIAMOND IDENTIFICATION REPORT

October 15, 2022
 IGI Report Number LG547274928
 Description LABORATORY GROWN DIAMOND
 Shape and Cutting Style OVAL BRILLIANT
 Measurements 6.61 X 4.47 X 2.78 MM

GRADING RESULTS

Carat Weight 0.55 CARAT
 Color Grade FANCY VIVID PINK
 Clarity Grade VVS 2

ADDITIONAL GRADING INFORMATION

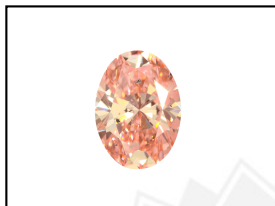
Polish VERY GOOD
 Symmetry VERY GOOD
 Fluorescence SLIGHT
 Inscription(s) LABGROWN IGI LG547274928

Comments: This Laboratory Grown Diamond was created by High Pressure High Temperature (HPHT) growth process.
 Indications of post-growth treatment.

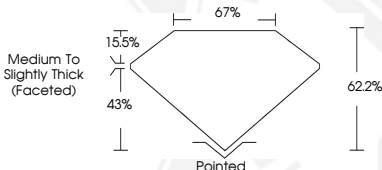
ELECTRONIC COPY

**LABORATORY GROWN
DIAMOND REPORT**

LG547274928



LASERSCRIBESM
Sample Images Used



**IGI LABORATORY GROWN
DIAMOND ID REPORT**

October 15, 2022
 IGI Report Number **LG547274928**
OVAL BRILLIANT
6.61 X 4.47 X 2.78 MM
 Carat Weight 0.55 CARAT
 Color Grade FANCY VIVID PINK
 Clarity Grade VVS 2
 Polish VERY GOOD
 Symmetry VERY GOOD
 Fluorescence SLIGHT
 Inscription(s) LABGROWN IGI
 LG547274928

Comments: This Laboratory Grown Diamond was created by High Pressure High Temperature (HPHT) growth process.
 Indications of post-growth treatment.

**IGI LABORATORY GROWN
DIAMOND ID REPORT**

October 15, 2022
 IGI Report Number **LG547274928**
OVAL BRILLIANT
6.61 X 4.47 X 2.78 MM
 Carat Weight 0.55 CARAT
 Color Grade FANCY VIVID PINK
 Clarity Grade VVS 2
 Polish VERY GOOD
 Symmetry VERY GOOD
 Fluorescence SLIGHT
 Inscription(s) LABGROWN IGI
 LG547274928

Comments: This Laboratory Grown Diamond was created by High Pressure High Temperature (HPHT) growth process.
 Indications of post-growth treatment.

THIS DOCUMENT WAS PRODUCED WITH THE FOLLOWING SECURITY MEASURES: SPECIAL DOCUMENT PAPER, INK SCREENS, WATERMARK, BACKGROUND DESIGN, HOLOGRAM AND OTHER SECURITY FEATURES NOT LISTED AND DO EXCEED DOCUMENT SECURITY INDUSTRY GUIDELINES.

For terms & conditions and to verify this report, please visit www.igi.org