



**INTERNATIONAL
GEMOLOGICAL
INSTITUTE**

ELECTRONIC COPY

**LABORATORY GROWN
DIAMOND REPORT**

**IGI LABORATORY GROWN
DIAMOND ID REPORT**

October 15, 2022
IGI Report Number **LG547274974**

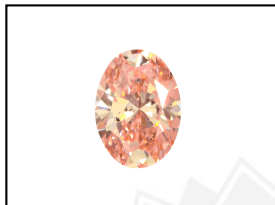
LABORATORY GROWN DIAMOND REPORT

LG547274974

OVAL BRILLIANT
7.37 X 5.05 X 2.93 MM
Carat Weight 0.73 CARAT
Color Grade FANCY VIVID PINK
Clarity Grade VS 2
Polish EXCELLENT
Symmetry VERY GOOD
Fluorescence SLIGHT
Inscription(s) LABGROWN IGI
LG547274974

IGI LABORATORY GROWN DIAMOND IDENTIFICATION REPORT

October 15, 2022
IGI Report Number LG547274974
Description LABORATORY GROWN DIAMOND
Shape and Cutting Style OVAL BRILLIANT
Measurements 7.37 X 5.05 X 2.93 MM



Comments: This Laboratory Grown Diamond was created by High Pressure High Temperature (HPHT) growth process. Indications of post-growth treatment.

GRADING RESULTS

Carat Weight 0.73 CARAT
Color Grade FANCY VIVID PINK
Clarity Grade VS 2

LASERSCRIBESM
Sample Images Used



ADDITIONAL GRADING INFORMATION

Polish EXCELLENT
Symmetry VERY GOOD
Fluorescence SLIGHT
Inscription(s) LABGROWN IGI LG547274974

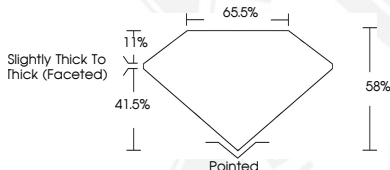
Comments: This Laboratory Grown Diamond was created by High Pressure High Temperature (HPHT) growth process. Indications of post-growth treatment.

**IGI LABORATORY GROWN
DIAMOND ID REPORT**

October 15, 2022
IGI Report Number **LG547274974**

OVAL BRILLIANT
7.37 X 5.05 X 2.93 MM
Carat Weight 0.73 CARAT
Color Grade FANCY VIVID PINK
Clarity Grade VS 2
Polish EXCELLENT
Symmetry VERY GOOD
Fluorescence SLIGHT
Inscription(s) LABGROWN IGI
LG547274974

Comments: This Laboratory Grown Diamond was created by High Pressure High Temperature (HPHT) growth process. Indications of post-growth treatment.



THIS DOCUMENT WAS PRODUCED WITH THE FOLLOWING SECURITY MEASURES: SPECIAL DOCUMENT PAPER, INK SCREENS, WATERMARK, BACKGROUND DESIGN, HOLOGRAM AND OTHER SECURITY FEATURES NOT LISTED AND DO EXCEED DOCUMENT SECURITY INDUSTRY GUIDELINES.

For terms & conditions and to verify this report, please visit www.igi.org