



**INTERNATIONAL  
GEMOLOGICAL  
INSTITUTE**

**ELECTRONIC COPY**

**LABORATORY GROWN  
DIAMOND REPORT**

**IGI LABORATORY GROWN  
DIAMOND ID REPORT**

October 17, 2022  
IGI Report Number **LG547275009**

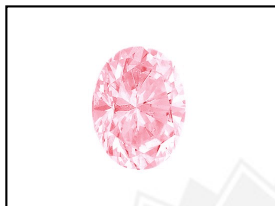
**LABORATORY GROWN DIAMOND REPORT**

**LG547275009**

**OVAL BRILLIANT**  
**5.67 X 4.12 X 2.57 MM**  
Carat Weight 0.37 CARAT  
Color Grade FANCY INTENSE PINK  
Clarity Grade VVS 2  
Polish EXCELLENT  
Symmetry VERY GOOD  
Fluorescence SLIGHT  
Inscription(s) LABGROWN IGI  
LG547275009

**IGI LABORATORY GROWN DIAMOND IDENTIFICATION REPORT**

October 17, 2022  
IGI Report Number LG547275009  
Description LABORATORY GROWN DIAMOND  
Shape and Cutting Style OVAL BRILLIANT  
Measurements 5.67 X 4.12 X 2.57 MM



Comments: This Laboratory Grown Diamond was created by High Pressure High Temperature (HPHT) growth process. Indications of post-growth treatment.

**GRADING RESULTS**

Carat Weight 0.37 CARAT  
Color Grade FANCY INTENSE PINK  
Clarity Grade VVS 2



**ADDITIONAL GRADING INFORMATION**

Polish EXCELLENT  
Symmetry VERY GOOD  
Fluorescence SLIGHT  
Inscription(s) LABGROWN IGI LG547275009

**LASERSCRIBE<sup>SM</sup>**  
Sample Images Used



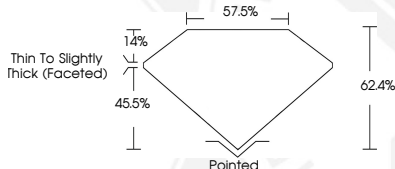
Comments: This Laboratory Grown Diamond was created by High Pressure High Temperature (HPHT) growth process. Indications of post-growth treatment.

**IGI LABORATORY GROWN  
DIAMOND ID REPORT**

October 17, 2022  
IGI Report Number **LG547275009**

**OVAL BRILLIANT**  
**5.67 X 4.12 X 2.57 MM**  
Carat Weight 0.37 CARAT  
Color Grade FANCY INTENSE PINK  
Clarity Grade VVS 2  
Polish EXCELLENT  
Symmetry VERY GOOD  
Fluorescence SLIGHT  
Inscription(s) LABGROWN IGI  
LG547275009

Comments: This Laboratory Grown Diamond was created by High Pressure High Temperature (HPHT) growth process. Indications of post-growth treatment.



THIS DOCUMENT WAS PRODUCED WITH THE FOLLOWING SECURITY MEASURES: SPECIAL DOCUMENT PAPER, INK SCREENS, WATERMARK, BACKGROUND DESIGN, HOLOGRAM AND OTHER SECURITY FEATURES NOT LISTED AND DO EXCEED DOCUMENT SECURITY INDUSTRY GUIDELINES.

For terms & conditions and to verify this report, please visit [www.igi.org](http://www.igi.org)