



**INTERNATIONAL  
GEMOLOGICAL  
INSTITUTE**

**ELECTRONIC COPY**

**LABORATORY GROWN  
DIAMOND REPORT**

**LG547275071**

**IGI LABORATORY GROWN  
DIAMOND ID REPORT**

October 17, 2022  
IGI Report Number **LG547275071**  
**PEAR BRILLIANT**  
**8.06 X 5.18 X 3.12 MM**  
Carat Weight 0.79 CARAT  
Color Grade FANCY INTENSE PINK  
Clarity Grade VVS 2  
Polish VERY GOOD  
Symmetry VERY GOOD  
Fluorescence SLIGHT  
Inscription(s) LABGROWN LG547275071

Comments: This Laboratory Grown Diamond was created by Chemical Vapor Deposition (CVD) growth process. Indications of post-growth treatment.

**LABORATORY GROWN DIAMOND REPORT**

**IGI LABORATORY GROWN DIAMOND IDENTIFICATION REPORT**

October 17, 2022  
IGI Report Number LG547275071  
Description LABORATORY GROWN DIAMOND  
Shape and Cutting Style PEAR BRILLIANT  
Measurements 8.06 X 5.18 X 3.12 MM

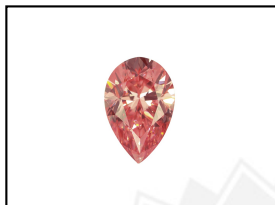
**GRADING RESULTS**

Carat Weight 0.79 CARAT  
Color Grade FANCY INTENSE PINK  
Clarity Grade VVS 2

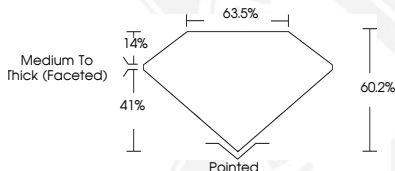
**ADDITIONAL GRADING INFORMATION**

Polish VERY GOOD  
Symmetry VERY GOOD  
Fluorescence SLIGHT  
Inscription(s) LABGROWN LG547275071

Comments: This Laboratory Grown Diamond was created by Chemical Vapor Deposition (CVD) growth process. Indications of post-growth treatment.



**LASERSCRIBE<sup>SM</sup>**  
Sample Images Used



**IGI LABORATORY GROWN  
DIAMOND ID REPORT**

October 17, 2022  
IGI Report Number **LG547275071**  
**PEAR BRILLIANT**  
**8.06 X 5.18 X 3.12 MM**  
Carat Weight 0.79 CARAT  
Color Grade FANCY INTENSE PINK  
Clarity Grade VVS 2  
Polish VERY GOOD  
Symmetry VERY GOOD  
Fluorescence SLIGHT  
Inscription(s) LABGROWN LG547275071

Comments: This Laboratory Grown Diamond was created by Chemical Vapor Deposition (CVD) growth process. Indications of post-growth treatment.

THIS DOCUMENT WAS PRODUCED WITH THE FOLLOWING SECURITY MEASURES: SPECIAL DOCUMENT PAPER, INK SCREENS, WATERMARK, BACKGROUND DESIGN, HOLOGRAM AND OTHER SECURITY FEATURES NOT LISTED AND DO EXCEED DOCUMENT SECURITY INDUSTRY GUIDELINES.

For terms & conditions and to verify this report, please visit [www.igi.org](http://www.igi.org)