



ELECTRONIC COPY

LABORATORY GROWN DIAMOND REPORT

September 23, 2022
IGI Report Number LG547277009
Description LABORATORY GROWN DIAMOND
Shape and Cutting Style OVAL BRILLIANT
Measurements 11.65 X 8.33 X 5.18 MM

GRADING RESULTS

Carat Weight 3.06 CARATS
Color Grade D
Clarity Grade VS 2

ADDITIONAL GRADING INFORMATION

Polish EXCELLENT
Symmetry EXCELLENT
Fluorescence NONE

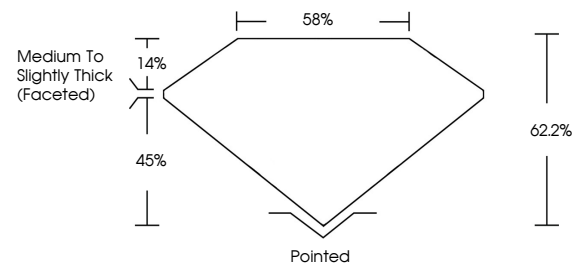
Inscription(s) LABGROWN IGI LG547277009

Comments: As Grown - No indication of post-growth treatment.

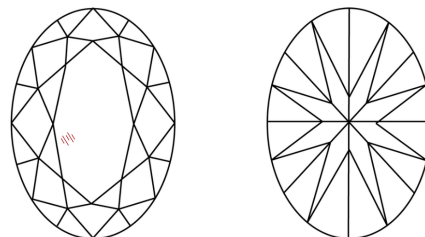
This Laboratory Grown Diamond was created by High Pressure High Temperature (HPHT) growth process. Type II

LG547277009

PROPORTIONS



CLARITY CHARACTERISTICS

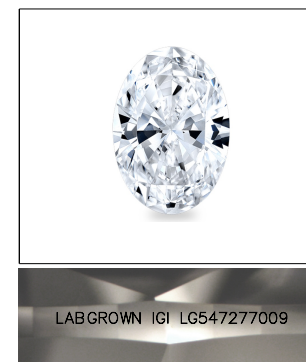


KEY TO SYMBOLS

Red symbols indicate internal characteristics.
Green symbols indicate external characteristics.

GRADING SCALES

Table with 2 rows and 5 columns showing color grading scales (CL, NC, FT, VLT, LT) and clarity (10x) grading scales (FL, IF, VVS, VS, SI, I).

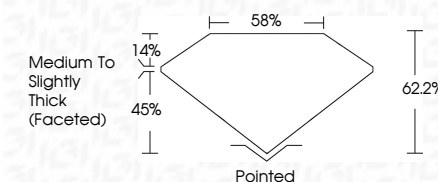


LABGROWN IGI LG547277009

LASERSCRIBE SM

Sample Image Used

September 23, 2022
IGI Report Number LG547277009
Description LABORATORY GROWN DIAMOND
Shape and Cutting Style OVAL BRILLIANT
Measurements 11.65 X 8.33 X 5.18 MM
GRADING RESULTS
Carat Weight 3.06 CARATS
Color Grade D
Clarity Grade VS 2



ADDITIONAL GRADING INFORMATION

Polish EXCELLENT
Symmetry EXCELLENT
Fluorescence NONE
Inscription(s) LABGROWN IGI LG547277009

Comments: As Grown - No indication of post-growth treatment. This Laboratory Grown Diamond was created by High Pressure High Temperature (HPHT) growth process. Type II



IGI

September 23, 2022
IGI Report No LG547277009
OVAL BRILLIANT
Carat Weight 3.06 CARATS
Color Grade D
Clarity Grade VS 2
Depth 62.2%
Table 14%
Crown 45%
Girdle Medium To Slightly Thick (Faceted)
Culet Pointed
Polish EXCELLENT
Symmetry EXCELLENT
Fluorescence NONE
Inscription(s) LABGROWN IGI LG547277009
Comments:

As Grown - No indication of post-growth treatment. The Laboratory Grown Diamond was created by High Pressure High Temperature (HPHT) growth process. Type II

