



ELECTRONIC COPY

LABORATORY GROWN DIAMOND REPORT

September 30, 2022
IGI Report Number LG549205017
Description LABORATORY GROWN DIAMOND
Shape and Cutting Style ROUND BRILLIANT
Measurements 11.89 - 11.98 X 7.30 MM

GRADING RESULTS

Carat Weight 6.39 CARATS
Color Grade I
Clarity Grade VVS 2
Cut Grade IDEAL

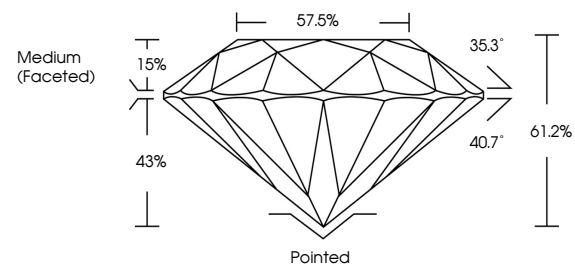
ADDITIONAL GRADING INFORMATION

Polish EXCELLENT
Symmetry EXCELLENT
Fluorescence NONE
Inscription(s) LABGROWN IGI LG549205017

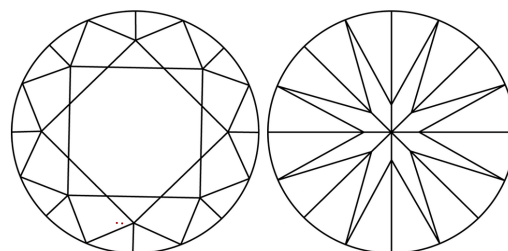
Comments: HEARTS & ARROWS
As Grown - No indication of post-growth treatment.
This Laboratory Grown Diamond was created by High Pressure High Temperature (HPHT) growth process.
Type II

LG549205017

PROPORTIONS



CLARITY CHARACTERISTICS



KEY TO SYMBOLS

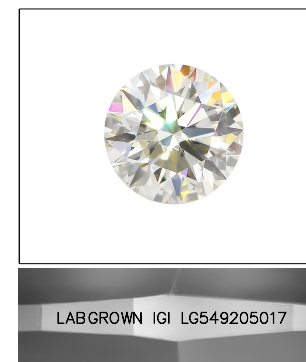
Red symbols indicate internal characteristics.
Green symbols indicate external characteristics.



www.igi.org

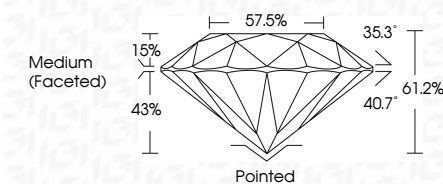
GRADING SCALES

Table showing grading scales for Color (CL), Clarity (10x), and other categories with their corresponding grades.



LASERSCRIBE SM
Sample Image Used

September 30, 2022
IGI Report Number LG549205017
Description LABORATORY GROWN DIAMOND
Shape and Cutting Style ROUND BRILLIANT
Measurements 11.89 - 11.98 X 7.30 MM
GRADING RESULTS
Carat Weight 6.39 CARATS
Color Grade I
Clarity Grade VVS 2
Cut Grade IDEAL



ADDITIONAL GRADING INFORMATION

Polish EXCELLENT
Symmetry EXCELLENT
Fluorescence NONE
Inscription(s) LABGROWN IGI LG549205017

Comments: HEARTS & ARROWS
As Grown - No indication of post-growth treatment.
This Laboratory Grown Diamond was created by High Pressure High Temperature (HPHT) growth process.
Type II



Summary table of report details including date, report number, measurements, carat weight, color grade, clarity grade, cut grade, and grading results.