



**INTERNATIONAL
GEMOLOGICAL
INSTITUTE**

ELECTRONIC COPY

**LABORATORY GROWN
DIAMOND REPORT**

**IGI LABORATORY GROWN
DIAMOND ID REPORT**

October 31, 2022
IGI Report Number **LG549211124**

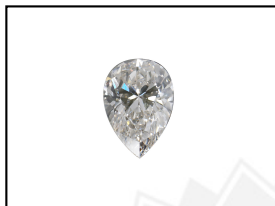
LABORATORY GROWN DIAMOND REPORT

LG549211124

PEAR BRILLIANT
6.42 X 4.00 X 2.47 MM
Carat Weight 0.37 CARAT
Color Grade G
Clarity Grade VS 1
Cut Grade VERY GOOD
Polish EXCELLENT
Symmetry EXCELLENT
Fluorescence NONE
Inscription(s) LABGROWN (IGI) LG549211124

IGI LABORATORY GROWN DIAMOND IDENTIFICATION REPORT

October 31, 2022
IGI Report Number LG549211124
Description LABORATORY GROWN DIAMOND
Shape and Cutting Style PEAR BRILLIANT
Measurements 6.42 X 4.00 X 2.47 MM



Comments: This Laboratory Grown Diamond was created by Chemical Vapor Deposition (CVD) growth process and may include post-growth treatment.
Type Ila

GRADING RESULTS

Carat Weight 0.37 CARAT
Color Grade G
Clarity Grade VS 1
Cut Grade VERY GOOD

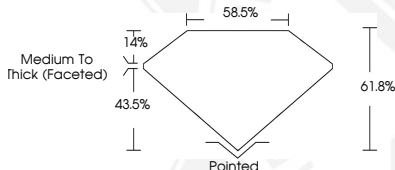
LASERSCRIBESM
Sample Images Used



ADDITIONAL GRADING INFORMATION

Polish EXCELLENT
Symmetry EXCELLENT
Fluorescence NONE
Inscription(s) LABGROWN (IGI) LG549211124

Comments: This Laboratory Grown Diamond was created by Chemical Vapor Deposition (CVD) growth process and may include post-growth treatment.
Type Ila



**IGI LABORATORY GROWN
DIAMOND ID REPORT**

October 31, 2022
IGI Report Number **LG549211124**

PEAR BRILLIANT
6.42 X 4.00 X 2.47 MM
Carat Weight 0.37 CARAT
Color Grade G
Clarity Grade VS 1
Cut Grade VERY GOOD
Polish EXCELLENT
Symmetry EXCELLENT
Fluorescence NONE
Inscription(s) LABGROWN (IGI) LG549211124

Comments: This Laboratory Grown Diamond was created by Chemical Vapor Deposition (CVD) growth process and may include post-growth treatment.
Type Ila

THIS DOCUMENT WAS PRODUCED WITH THE FOLLOWING SECURITY MEASURES: SPECIAL DOCUMENT PAPER, INK SCREENS, WATERMARK, BACKGROUND DESIGN, HOLOGRAM AND OTHER SECURITY FEATURES NOT LISTED AND DO EXCEED DOCUMENT SECURITY INDUSTRY GUIDELINES.

For terms & conditions and to verify this report, please visit www.igi.org