



**INTERNATIONAL
GEMOLOGICAL
INSTITUTE**

ELECTRONIC COPY

**LABORATORY GROWN
DIAMOND REPORT**

**IGI LABORATORY GROWN
DIAMOND ID REPORT**

November 2, 2022
IGI Report Number **LG549211519**

LABORATORY GROWN DIAMOND REPORT

IGI LABORATORY GROWN DIAMOND IDENTIFICATION REPORT

November 2, 2022
IGI Report Number **LG549211519**
Description **LABORATORY GROWN DIAMOND**
Shape and Cutting Style **PEAR BRILLIANT**
Measurements **7.25 X 4.68 X 2.86 MM**

GRADING RESULTS

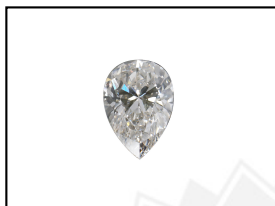
Carat Weight **0.57 CARAT**
Color Grade **E**
Clarity Grade **VS 2**
Cut Grade **VERY GOOD**

ADDITIONAL GRADING INFORMATION

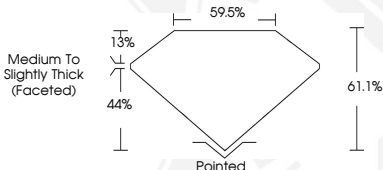
Polish **EXCELLENT**
Symmetry **EXCELLENT**
Fluorescence **NONE**
Inscription(s) **LABGROWN IGI LG549211519**

Comments: This Laboratory Grown Diamond was created by Chemical Vapor Deposition (CVD) growth process and may include post-growth treatment.
Type Ila

LG549211519



LASERSCRIBESM
Sample Images Used



PEAR BRILLIANT
7.25 X 4.68 X 2.86 MM
Carat Weight **0.57 CARAT**
Color Grade **E**
Clarity Grade **VS 2**
Cut Grade **VERY GOOD**
Polish **EXCELLENT**
Symmetry **EXCELLENT**
Fluorescence **NONE**
Inscription(s) **LABGROWN IGI LG549211519**

Comments: This Laboratory Grown Diamond was created by Chemical Vapor Deposition (CVD) growth process and may include post-growth treatment.
Type Ila

**IGI LABORATORY GROWN
DIAMOND ID REPORT**

November 2, 2022
IGI Report Number **LG549211519**

PEAR BRILLIANT
7.25 X 4.68 X 2.86 MM
Carat Weight **0.57 CARAT**
Color Grade **E**
Clarity Grade **VS 2**
Cut Grade **VERY GOOD**
Polish **EXCELLENT**
Symmetry **EXCELLENT**
Fluorescence **NONE**
Inscription(s) **LABGROWN IGI LG549211519**

Comments: This Laboratory Grown Diamond was created by Chemical Vapor Deposition (CVD) growth process and may include post-growth treatment.
Type Ila

THIS DOCUMENT WAS PRODUCED WITH THE FOLLOWING SECURITY MEASURES: SPECIAL DOCUMENT PAPER, INK SCREENS, WATERMARK, BACKGROUND DESIGN, HOLOGRAM AND OTHER SECURITY FEATURES NOT LISTED AND DO EXCEED DOCUMENT SECURITY INDUSTRY GUIDELINES.

For terms & conditions and to verify this report, please visit www.igi.org