



**ELECTRONIC COPY**

**LABORATORY GROWN DIAMOND REPORT**

September 30, 2022  
 IGI Report Number **LG549222774**  
 Description **LABORATORY GROWN  
DIAMOND**  
 Shape and Cutting Style **CUT CORNERED RECTANGULAR  
MODIFIED BRILLIANT**  
 Measurements **6.96 X 4.96 X 3.41 MM**

**GRADING RESULTS**

Carat Weight **1.01 CARAT**  
 Color Grade **D**  
 Clarity Grade **VVS 2**

**ADDITIONAL GRADING INFORMATION**

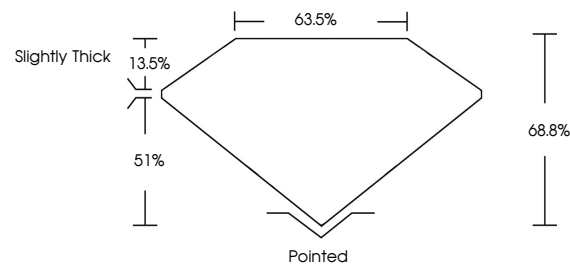
Polish **EXCELLENT**  
 Symmetry **EXCELLENT**  
 Fluorescence **NONE**

Inscription(s) **LABGROWN IGI LG549222774**

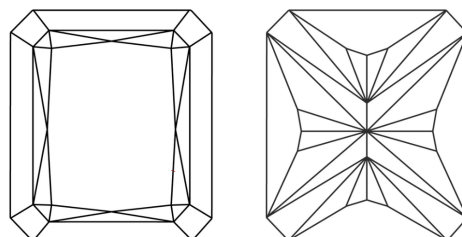
Comments: As Grown - No indication of post-growth treatment.  
 This Laboratory Grown Diamond was created by High Pressure High Temperature (HPHT) growth process.  
 Type II

LG549222774

**PROPORTIONS**



**CLARITY CHARACTERISTICS**



**KEY TO SYMBOLS**

Red symbols indicate internal characteristics.  
 Green symbols indicate external characteristics.

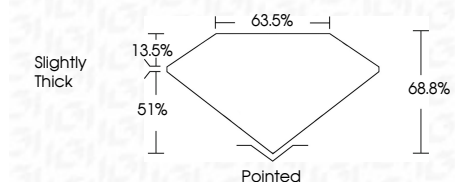
**GRADING SCALES**

COLOR GRADING SCALE	CL	NC	FT	VLT	LT	
	COLORLESS D-F	NEAR COLORLESS G-J	FAINT K-M	VERY LIGHT N-R	LIGHT S-Z	
CLARITY (10x) GRADING SCALE	FL	IF	VVS	VS	SI	I
	FLAWLESS INTERNALLY FLAWLESS	VERY VERY SLIGHTLY INCLUDED	VERY SLIGHTLY INCLUDED	SLIGHTLY INCLUDED	INCLUDED	INCLUDED

September 30, 2022  
 IGI Report Number **LG549222774**  
 Description **LABORATORY GROWN  
DIAMOND**  
 Shape and Cutting Style **CUT CORNERED  
RECTANGULAR MODIFIED  
BRILLIANT**  
 Measurements **6.96 X 4.96 X 3.41 MM**

**GRADING RESULTS**

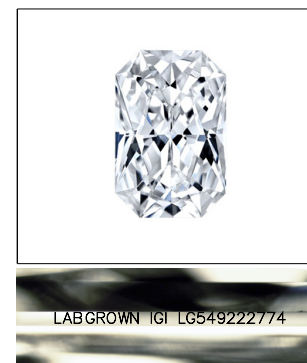
Carat Weight **1.01 CARAT**  
 Color Grade **D**  
 Clarity Grade **VVS 2**



**ADDITIONAL GRADING INFORMATION**

Polish **EXCELLENT**  
 Symmetry **EXCELLENT**  
 Fluorescence **NONE**  
 Inscription(s) **LABGROWN IGI LG549222774**

Comments: As Grown - No indication of post-growth treatment.  
 This Laboratory Grown Diamond was created by High Pressure High Temperature (HPHT) growth process.  
 Type II



**LASERSCRIBE<sup>SM</sup>**

Sample Image Used



**IGI**

September 30, 2022  
 IGI Report No **LG549222774**  
**CUT CORNERED RECT. MODIFIED**  
**6.96 X 4.96 X 3.41 MM**  
 Carat Weight **1.01 CARAT**  
 Color Grade **D**  
 Clarity Grade **VVS 2**  
 Depth **68.8%**  
 Table **63.5%**  
 Girdle **Slightly Thick**  
 Culet **Pointed**  
 Polish **EXCELLENT**  
 Symmetry **EXCELLENT**  
 Fluorescence **NONE**  
 Inscription(s) **LABGROWN IGI LG549222774**  
 Comments: **As Grown - No indication of post-growth treatment. The Laboratory Grown Diamond was created by High Pressure High Temperature (HPHT) growth process. Type II**