



ELECTRONIC COPY

LABORATORY GROWN DIAMOND REPORT

September 26, 2022
IGI Report Number LG549280648
Description LABORATORY GROWN DIAMOND
Shape and Cutting Style ROUND BRILLIANT
Measurements 8.98 - 9.02 X 5.50 MM

GRADING RESULTS

Carat Weight 2.76 CARATS
Color Grade I
Clarity Grade VVS 2
Cut Grade IDEAL

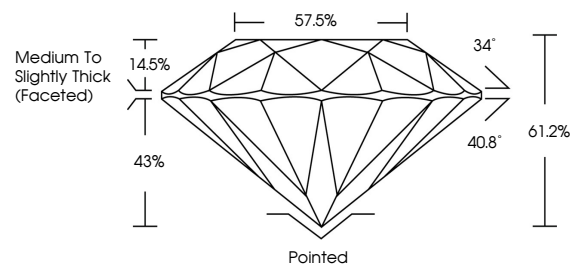
ADDITIONAL GRADING INFORMATION

Polish EXCELLENT
Symmetry EXCELLENT
Fluorescence NONE
Inscription(s) LABGROWN IGI LG549280648

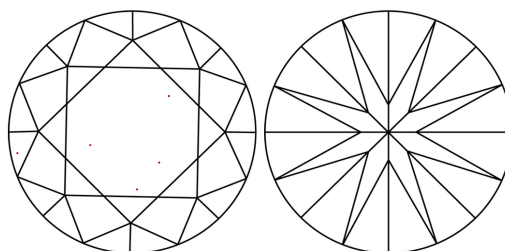
Comments: HEARTS & ARROWS
This Laboratory Grown Diamond was created by Chemical Vapor Deposition (CVD) growth process and may include post-growth treatment.
Type IIa

LG549280648

PROPORTIONS

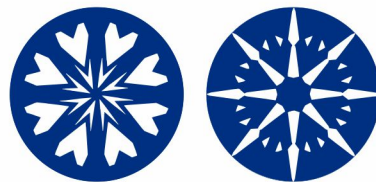


CLARITY CHARACTERISTICS



KEY TO SYMBOLS

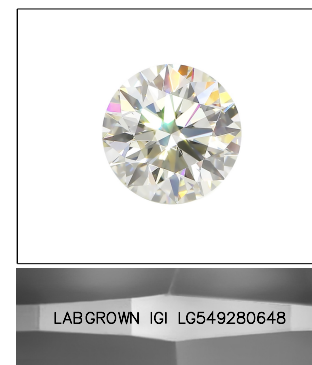
Red symbols indicate internal characteristics.
Green symbols indicate external characteristics.



www.igi.org

GRADING SCALES

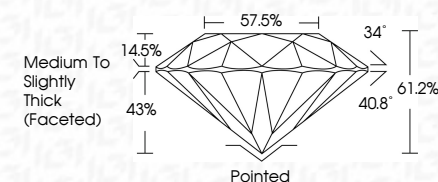
Table with 5 columns for Color Grading Scale (CL, NC, FT, VLT, LT) and Clarity (10x) Grading Scale (FL, IF, VVS, VS, SI, I).



LASERSCRIBE SM

Sample Image Used

September 26, 2022
IGI Report Number LG549280648
Description LABORATORY GROWN DIAMOND
Shape and Cutting Style ROUND BRILLIANT
Measurements 8.98 - 9.02 X 5.50 MM
GRADING RESULTS
Carat Weight 2.76 CARATS
Color Grade I
Clarity Grade VVS 2
Cut Grade IDEAL



ADDITIONAL GRADING INFORMATION

Polish EXCELLENT
Symmetry EXCELLENT
Fluorescence NONE
Inscription(s) LABGROWN IGI LG549280648

Comments: HEARTS & ARROWS
This Laboratory Grown Diamond was created by Chemical Vapor Deposition (CVD) growth process and may include post-growth treatment.
Type IIa



September 26, 2022
IGI Report No LG549280648
ROUND BRILLIANT
8.98 - 9.02 X 5.50 MM
Carat Weight 2.76 CARATS
Color Grade I
Clarity Grade VVS 2
Cut Grade IDEAL
Depth 61.2%
Table 57.5%
Girdle Medium To Slightly Thick (Faceted)
Culet Pointed
Polish EXCELLENT
Symmetry EXCELLENT
Fluorescence NONE
Inscription(s) LABGROWN IGI LG549280648
Comments: HEARTS & ARROWS
This Laboratory Grown Diamond was created by Chemical Vapor Deposition (CVD) growth process and may include post-growth treatment.
Type IIa