



**INTERNATIONAL  
GEMOLOGICAL  
INSTITUTE**

**ELECTRONIC COPY**

**LABORATORY GROWN  
DIAMOND REPORT**

**IGI LABORATORY GROWN  
DIAMOND ID REPORT**

October 17, 2022  
IGI Report Number **LG54928519**

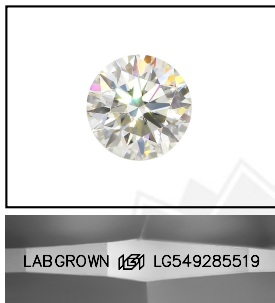
**LABORATORY GROWN DIAMOND REPORT**

**LG54928519**

**ROUND BRILLIANT**  
**7.21 - 7.28 X 4.50 MM**  
Carat Weight 1.46 CARAT  
Color Grade G  
Clarity Grade VS 1  
Cut Grade IDEAL  
Polish EXCELLENT  
Symmetry EXCELLENT  
Fluorescence NONE  
Inscription(s) LABGROWN IGI  
LG54928519

**IGI LABORATORY GROWN DIAMOND IDENTIFICATION REPORT**

October 17, 2022  
IGI Report Number LG54928519  
Description LABORATORY GROWN DIAMOND  
Shape and Cutting Style ROUND BRILLIANT  
Measurements 7.21 - 7.28 X 4.50 MM



Comments: As Grown - No indication of post-growth treatment.  
This Laboratory Grown Diamond was created by High Pressure High Temperature (HPHT) growth process.  
Faint Blue

**GRADING RESULTS**

Carat Weight 1.46 CARAT  
Color Grade G  
Clarity Grade VS 1  
Cut Grade IDEAL

**LASERSCRIBE<sup>SM</sup>**  
Sample Images Used



**ADDITIONAL GRADING INFORMATION**

Polish EXCELLENT  
Symmetry EXCELLENT  
Fluorescence NONE  
Inscription(s) LABGROWN IGI LG54928519

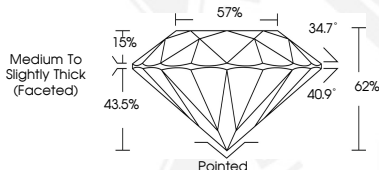
**IGI LABORATORY GROWN  
DIAMOND ID REPORT**

October 17, 2022  
IGI Report Number **LG54928519**

Comments: As Grown - No indication of post-growth treatment.  
This Laboratory Grown Diamond was created by High Pressure High Temperature (HPHT) growth process.  
Faint Blue

**ROUND BRILLIANT**  
**7.21 - 7.28 X 4.50 MM**  
Carat Weight 1.46 CARAT  
Color Grade G  
Clarity Grade VS 1  
Cut Grade IDEAL  
Polish EXCELLENT  
Symmetry EXCELLENT  
Fluorescence NONE  
Inscription(s) LABGROWN IGI  
LG54928519

Comments: As Grown - No indication of post-growth treatment.  
This Laboratory Grown Diamond was created by High Pressure High Temperature (HPHT) growth process.  
Faint Blue



THIS DOCUMENT WAS PRODUCED WITH THE FOLLOWING SECURITY MEASURES: SPECIAL DOCUMENT PAPER, INK SCREENS, WATERMARK, BACKGROUND DESIGN, HOLOGRAM AND OTHER SECURITY FEATURES NOT LISTED AND DO EXCEED DOCUMENT SECURITY INDUSTRY GUIDELINES.

For terms & conditions and to verify this report, please visit [www.igi.org](http://www.igi.org)