



INTERNATIONAL GEMOLOGICAL INSTITUTE

ELECTRONIC COPY

LABORATORY GROWN DIAMOND REPORT

LG549294322

LABORATORY GROWN DIAMOND REPORT

IGI LABORATORY GROWN DIAMOND IDENTIFICATION REPORT

September 24, 2022

IGI Report Number LG549294322

Description LABORATORY GROWN DIAMOND

Shape and Cutting Style PEAR BRILLIANT

Measurements 7.15 X 4.41 X 2.67 MM

GRADING RESULTS

Carat Weight 0.51 CARAT

Color Grade H

Clarity Grade VVS 1

ADDITIONAL GRADING INFORMATION

Polish EXCELLENT

Symmetry EXCELLENT

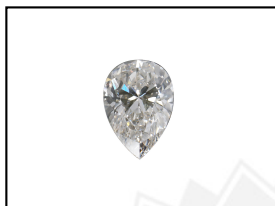
Fluorescence NONE

Inscription(s) LABGROWN IGI LG549294322

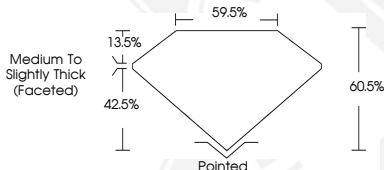
Comments: As Grown - No indication of post-growth treatment.

This Laboratory Grown Diamond was created by High Pressure High Temperature (HPHT) growth process.

Type II



LASERSCRIBESM
Sample Images Used



IGI LABORATORY GROWN DIAMOND ID REPORT

September 24, 2022

IGI Report Number LG549294322

PEAR BRILLIANT

7.15 X 4.41 X 2.67 MM

Carat Weight 0.51 CARAT

Color Grade H

Clarity Grade VVS 1

Polish EXCELLENT

Symmetry EXCELLENT

Fluorescence NONE

Inscription(s) LABGROWN IGI LG549294322

Comments: As Grown - No

indication of post-growth

treatment.

This Laboratory Grown Diamond

was created by High Pressure High

Temperature (HPHT) growth

process.

Type II

IGI LABORATORY GROWN DIAMOND ID REPORT

September 24, 2022

IGI Report Number LG549294322

PEAR BRILLIANT

7.15 X 4.41 X 2.67 MM

Carat Weight 0.51 CARAT

Color Grade H

Clarity Grade VVS 1

Polish EXCELLENT

Symmetry EXCELLENT

Fluorescence NONE

Inscription(s) LABGROWN IGI LG549294322

Comments: As Grown - No

indication of post-growth

treatment.

This Laboratory Grown Diamond

was created by High Pressure High

Temperature (HPHT) growth

process.

Type II



THIS DOCUMENT WAS PRODUCED WITH THE FOLLOWING SECURITY MEASURES: SPECIAL DOCUMENT PAPER, INK SCREENS, WATERMARK, BACKGROUND DESIGN, HOLOGRAM AND OTHER SECURITY FEATURES NOT LISTED AND DO EXCEED DOCUMENT SECURITY INDUSTRY GUIDELINES.

For terms & conditions and to verify this report, please visit www.igi.org