



**ELECTRONIC COPY**

## LABORATORY GROWN DIAMOND REPORT

October 6, 2022	
IGI Report Number	LG550229710
Description	LABORATORY GROWN DIAMOND
Shape and Cutting Style	OVAL BRILLIANT
Measurements	11.98 X 8.41 X 5.34 MM

## GRADING RESULTS

Carat Weight	3.33 CARATS
Color Grade	H
Clarity Grade	VS 1

### ADDITIONAL GRADING INFORMATION

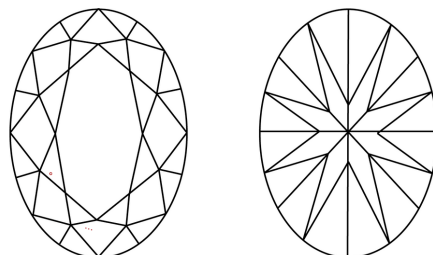
Polish	EXCELLENT
Symmetry	EXCELLENT
Fluorescence	NONE

Inscription(s) **LABGROWN IGI LG550229710**  
 Comments: This Laboratory Grown Diamond was created by Chemical Vapor Deposition (CVD) growth process and may include post-growth treatment.  
 Type IIa

Diagram illustrating the proportions of a diamond-shaped facet (LG550229710). The proportions are defined by the following dimensions:

- Top width: 56.5%
- Bottom width: 43%
- Height: 63.5%
- Top width to height ratio: 16%
- Bottom width to height ratio: 43%
- Bottom shape: Pointed

## CLARITY CHARACTERISTICS

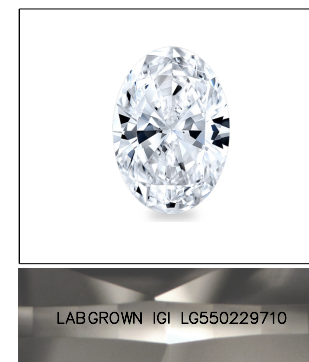


## KEY TO SYMBOLS

Red symbols indicate internal characteristics.  
Green symbols indicate external characteristics.

## GRADING SCALES

COLOR GRADING SCALE	CL		NC		FT		VLT		LT	
	COLORLESS D-F		NEAR COLORLESS G-J		FAINT K-M		VERY LIGHT N-R		LIGHT S-Z	
CLARITY (10x) GRADING SCALE	FL	IF	VVS		VS		SI		I	
	FLAWLESS INTERNALLY FLAWLESS		VERY VERY SLIGHTLY INCLUDED		VERY SLIGHTLY INCLUDED		SLIGHTLY INCLUDED		INCLUDED	

LASERSCRIBE<sup>SM</sup>

Sample Image Used

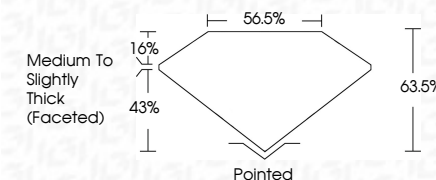


© IGI 2020, International Gemological Institute

FD - 10 20

LABORATORY GROWN DIAMOND REPORT

October 6, 2022	
IGI Report Number	LG550229710
Description	LABORATORY GROWN DIAMOND
Shape and Cutting Style	OVAL BRILLIANT
Measurements	11.98 X 8.41 X 5.34 MM
<b>GRADING RESULTS</b>	
Carat Weight	3.33 CARATS
Color Grade	H
Clarity Grade	VS 1



### ADDITIONAL GRADING INFORMATION

Polish	EXCELLENT
Symmetry	EXCELLENT
Fluorescence	NONE
Inscription(s)	LABGROWN IGI LG550229710

Comments: This Laboratory Grown Diamond was created by Chemical Vapor Deposition (CVD) growth process and may include post-growth treatment.  
Type IIa



<b>Date:</b>	October 6, 2022	<b>Report No.:</b>	LGS650229710	<b>Carat Weight:</b>	3.33 CARATS	<b>Color Grade:</b>	H	<b>Clarity Grade:</b>	VS 1	<b>Depth:</b>	63.5%	<b>Table:</b>	65.5%	<b>Girdle:</b>	Medium to Slightly Thick (Faceted)	<b>Culet:</b>	Poined	<b>Symmetry:</b>	EXCELLENT	<b>Fluorescence:</b>	NONE	<b>Inscriptions:</b>	LARGOWOWN LG LGS650229710	<b>Comments:</b>	This Laboratory Grown Diamond was created by Chemical Vapor Deposition (CVD) growth process and may include post-growth treatment.
<b>ID#:</b>	LAB-8233	<b>Product Name:</b>	DUAL BRILLIANT	<b>Dimensions:</b>	1.98 x 8.41 X 5.34 MM	<b>Shape:</b>	Round	<b>Finish:</b>	Fine	<b>Measurements:</b>	56.14x30.17x14.5mm	<b>Weight Tolerance:</b>	+/-0.01g	<b>Grading System:</b>	American Gem Society	<b>Setting Style:</b>	Prong Set	<b>Ring Size:</b>	US 7	<b>Stone Type:</b>	Diamond	<b>Mounting Location:</b>	Center	<b>Type I/C:</b>	

This Laboratory Grown Diamond was created by Chemical Vapor Deposition (CVD) growth process and may include post-growth treatment.