



**ELECTRONIC COPY**

**LABORATORY GROWN DIAMOND REPORT**

October 6, 2022  
 IGI Report Number **LG550232370**  
 Description **LABORATORY GROWN  
DIAMOND**  
 Shape and Cutting Style **ROUND BRILLIANT**  
 Measurements **10.71 - 10.74 X 6.51 MM**

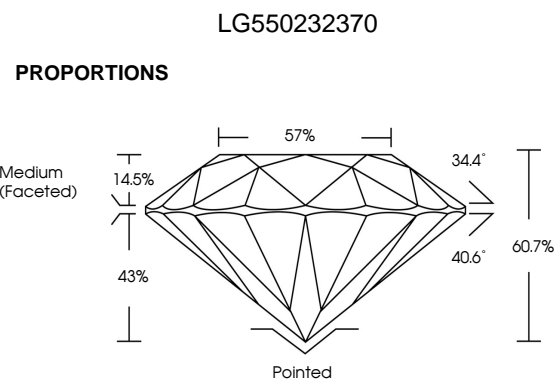
**GRADING RESULTS**

Carat Weight **4.57 CARATS**  
 Color Grade **H**  
 Clarity Grade **VS 1**  
 Cut Grade **IDEAL**

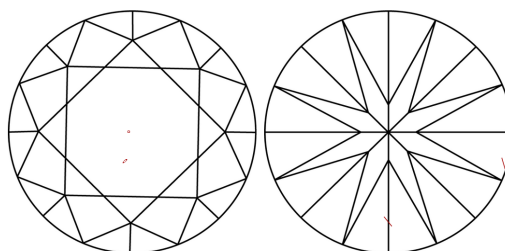
**ADDITIONAL GRADING INFORMATION**

Polish **EXCELLENT**  
 Symmetry **EXCELLENT**  
 Fluorescence **NONE**  
 Inscription(s) **LABGROWN IGI LG550232370**

Comments: HEARTS & ARROWS  
 This Laboratory Grown Diamond was created by  
 Chemical Vapor Deposition (CVD) growth process and  
 may include post-growth treatment.  
 Type IIa

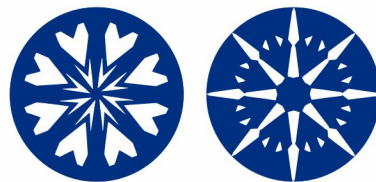


**CLARITY CHARACTERISTICS**



**KEY TO SYMBOLS**

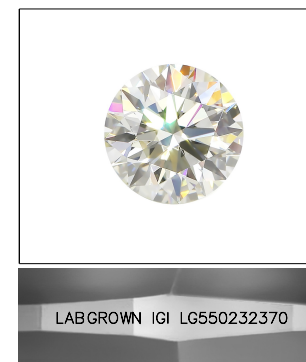
Red symbols indicate internal characteristics.  
 Green symbols indicate external characteristics.



[www.igi.org](http://www.igi.org)

**GRADING SCALES**

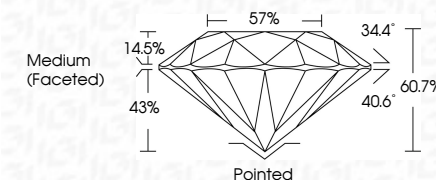
COLOR GRADING SCALE	CL	NC	FT	VLT	LT	
	COLORLESS D-F	NEAR COLORLESS G-J	FAINT K-M	VERY LIGHT N-R	LIGHT S-Z	
CLARITY (10x) GRADING SCALE	FL	IF	VVS	VS	SI	I
	FLAWLESS INTERNALLY FLAWLESS	VERY VERY SLIGHTLY INCLUDED	VERY SLIGHTLY INCLUDED	SLIGHTLY INCLUDED		INCLUDED



**LASERSCRIBE<sup>SM</sup>**

Sample Image Used

October 6, 2022  
 IGI Report Number **LG550232370**  
 Description **LABORATORY GROWN  
DIAMOND**  
 Shape and Cutting Style **ROUND BRILLIANT**  
 Measurements **10.71 - 10.74 X 6.51 MM**  
**GRADING RESULTS**  
 Carat Weight **4.57 CARATS**  
 Color Grade **H**  
 Clarity Grade **VS 1**  
 Cut Grade **IDEAL**



**ADDITIONAL GRADING INFORMATION**

Polish **EXCELLENT**  
 Symmetry **EXCELLENT**  
 Fluorescence **NONE**  
 Inscription(s) **LABGROWN IGI LG550232370**

Comments: HEARTS & ARROWS  
 This Laboratory Grown Diamond was created by  
 Chemical Vapor Deposition (CVD) growth process and  
 may include post-growth treatment.  
 Type IIa



**IGI**

October 6, 2022	IGI Report No LG550232370	ROUND BRILLIANT	4.57 CARATS	H	VS 1	IDEAL	60.7%	57%	Medium (Faceted)	Pointed	EXCELLENT	EXCELLENT	NONE	LABGROWN IGI LG550232370
IGI Report No LG550232370	10.71 - 10.74 X 6.51 MM	Carat Weight	4.57 CARATS	Color Grade	VS 1	Cut Grade	60.7%	Table	57%	Medium (Faceted)	Pointed	EXCELLENT	EXCELLENT	NONE
IGI Report No LG550232370	10.71 - 10.74 X 6.51 MM	Carat Weight	4.57 CARATS	Color Grade	VS 1	Cut Grade	60.7%	Table	57%	Medium (Faceted)	Pointed	EXCELLENT	EXCELLENT	NONE
IGI Report No LG550232370	10.71 - 10.74 X 6.51 MM	Carat Weight	4.57 CARATS	Color Grade	VS 1	Cut Grade	60.7%	Table	57%	Medium (Faceted)	Pointed	EXCELLENT	EXCELLENT	NONE
IGI Report No LG550232370	10.71 - 10.74 X 6.51 MM	Carat Weight	4.57 CARATS	Color Grade	VS 1	Cut Grade	60.7%	Table	57%	Medium (Faceted)	Pointed	EXCELLENT	EXCELLENT	NONE

Comments: HEARTS & ARROWS  
 This Laboratory Grown Diamond was  
 created by Chemical Vapor Deposition  
 (CVD) growth process and may include  
 post-growth treatment.  
 Type IIa