



ELECTRONIC COPY

LABORATORY GROWN DIAMOND REPORT

| | |
|-------------------------|-----------------------------|
| October 8, 2022 | |
| IGI Report Number | LG550235240 |
| Description | LABORATORY GROWN DIAMOND |
| Shape and Cutting Style | ROUND BRILLIANT |
| Measurements | 9.56 - 9.60 X 5.83 MM |

GRADING RESULTS

| | |
|---------------|-------------|
| Carat Weight | 3.23 CARATS |
| Color Grade | F |
| Clarity Grade | VS 2 |
| Cut Grade | IDEAL |

ADDITIONAL GRADING INFORMATION

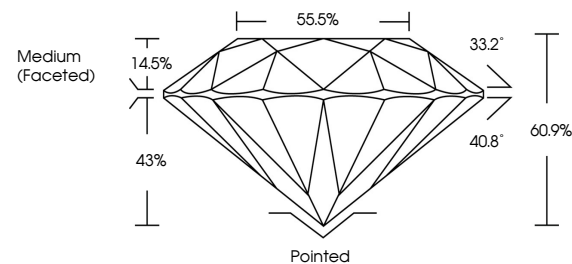
| | |
|--------------|-----------|
| Polish | EXCELLENT |
| Symmetry | EXCELLENT |
| Fluorescence | NONE |

Inscription(s) LABGROWN | G | LG550235240

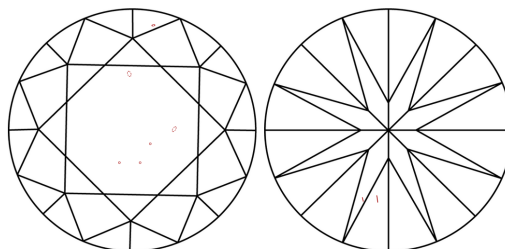
Comments: This Laboratory Grown Diamond was created by Chemical Vapor Deposition (CVD) growth process and may include post-growth treatment.
Type IIa

LG550235240

PROPORTIONS



CLARITY CHARACTERISTICS

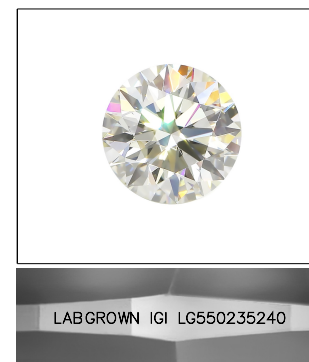


KEY TO SYMBOLS

Red symbols indicate internal characteristics.
Green symbols indicate external characteristics.

GRADING SCALES

| | | | | | | |
|-----------------------------|------------------------------|----|-----------------------------|------------------------|-------------------|-----------|
| COLOR GRADING SCALE | CL | | NC | FT | VLT | LT |
| | COLORLESS D-F | | NEAR COLORLESS G-J | FAINT K-M | VERY LIGHT N-R | LIGHT S-Z |
| CLARITY (10x) GRADING SCALE | FL | IF | VVS | VS | SI | I |
| | FLAWLESS INTERNALLY FLAWLESS | | VERY VERY SLIGHTLY INCLUDED | VERY SLIGHTLY INCLUDED | SLIGHTLY INCLUDED | INCLUDED |

LASERSCRIBESM

Sample Image Used

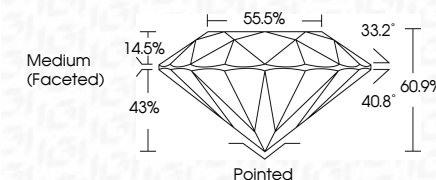


© IGI 2020, International Gemological Institute

FD - 10 20

LABORATORY GROWN DIAMOND REPORT

| | |
|-------------------------|-----------------------------|
| October 8, 2022 | |
| IGI Report Number | LG550235240 |
| Description | LABORATORY GROWN DIAMOND |
| Shape and Cutting Style | ROUND BRILLIANT |
| Measurements | 9.56 - 9.60 X 5.83 MM |
| GRADING RESULTS | |
| Carat Weight | 3.23 CARATS |
| Color Grade | F |
| Clarity Grade | VS 2 |
| Cut Grade | IDEAL |



ADDITIONAL GRADING INFORMATION

| | |
|----------------|--------------------------|
| Polish | EXCELLENT |
| Symmetry | EXCELLENT |
| Fluorescence | NONE |
| Inscription(s) | LABGROWN IGI LG550235240 |

Inscription(s) LABGROWN IGI LG550235240

Comments: This Laboratory Grown Diamond was created by Chemical Vapor Deposition (CVD) growth process and may include post-growth treatment.
Type IIa



| | | | | | | |
|-----------------|--------------------------|-------------|---|------------------|----------------|---|
| October 8, 2022 | GI Report No LG550282640 | 3.23 CARATS | F | VS 2 | Polished | Comments: |
| | ROUND BRILLIANT | | | IDEAL | EXCELLENT | This Laboratory Grown Diamond was created by Chemical Vapor Deposition (CVD) and may include post-growth treatment. |
| | 5.56 x 5.60 x 5.83 MM | | | 60.0% | EXCELLENT | |
| | Carat Weight | | | 55.5% | NONE | |
| | Color Grade | | | | LAB-GROWN (G) | |
| | Clarity Grade | | | Medium (Faceted) | LG550282640 | |
| | Cut Grade | | | | Quiet | |
| | Depth | | | | Polish | |
| | Table | | | | Symmetry | |
| | Girdle | | | | Fluorescence | |
| | | | | | Inscription(s) | |