



ELECTRONIC COPY

LABORATORY GROWN DIAMOND REPORT

October 7, 2022
IGI Report Number LG550243468
Description LABORATORY GROWN DIAMOND
Shape and Cutting Style PRINCESS CUT
Measurements 7.46 X 7.42 X 5.16 MM

GRADING RESULTS

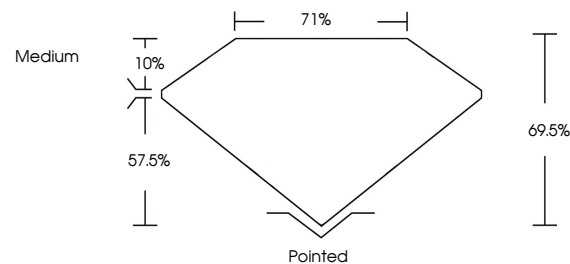
Carat Weight 2.46 CARATS
Color Grade F
Clarity Grade VVS 2

ADDITIONAL GRADING INFORMATION

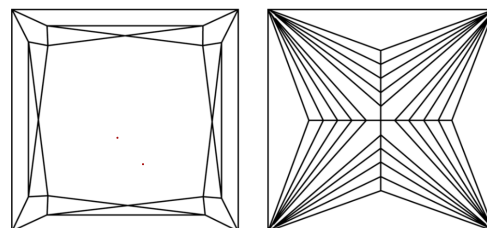
Polish EXCELLENT
Symmetry EXCELLENT
Fluorescence NONE
Inscription(s) LABGROWN IGI LG550243468
Comments: This Laboratory Grown Diamond was created by Chemical Vapor Deposition (CVD) growth process and may include post-growth treatment. Type IIa

LG550243468

PROPORTIONS



CLARITY CHARACTERISTICS

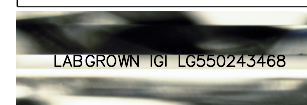


KEY TO SYMBOLS

Red symbols indicate internal characteristics.
Green symbols indicate external characteristics.

GRADING SCALES

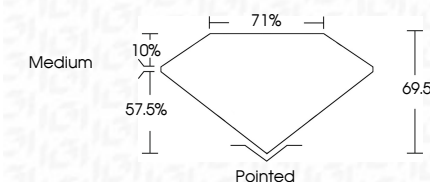
Table with 2 rows: COLOR GRADING SCALE (CL, NC, FT, VLT, LT) and CLARITY (10x) GRADING SCALE (FL, IF, VVS, VS, SI, I).



LASERSCRIBESM

Sample Image Used

October 7, 2022
IGI Report Number LG550243468
Description LABORATORY GROWN DIAMOND
Shape and Cutting Style PRINCESS CUT
Measurements 7.46 X 7.42 X 5.16 MM
GRADING RESULTS
Carat Weight 2.46 CARATS
Color Grade F
Clarity Grade VVS 2



ADDITIONAL GRADING INFORMATION

Polish EXCELLENT
Symmetry EXCELLENT
Fluorescence NONE
Inscription(s) LABGROWN IGI LG550243468
Comments: This Laboratory Grown Diamond was created by Chemical Vapor Deposition (CVD) growth process and may include post-growth treatment. Type IIa



IGI



Summary of report details including date, report number, measurements, grading results, and additional information.

The Laboratory Grown Diamond was created by Chemical Vapor Deposition (CVD) growth process and may include post-growth treatment. Type IIa