



**INTERNATIONAL
GEMOLOGICAL
INSTITUTE**

ELECTRONIC COPY

**LABORATORY GROWN
DIAMOND REPORT**

LG550253567

**IGI LABORATORY GROWN
DIAMOND ID REPORT**

November 3, 2022
IGI Report Number **LG550253567**
PEAR BRILLIANT
8.19 X 5.07 X 2.91 MM
Carat Weight 0.71 CARAT
Color Grade FANCY VIVID
YELLOW
Clarity Grade VS 2
Polish VERY GOOD
Symmetry VERY GOOD
Fluorescence NONE
Inscription(s) LABGROWN IGI LG550253567

Comments: As Grown - No indication of post-growth treatment.
This Laboratory Grown Diamond was created by High Pressure High Temperature (HPHT) growth process.

LABORATORY GROWN DIAMOND REPORT

IGI LABORATORY GROWN DIAMOND IDENTIFICATION REPORT

November 3, 2022
IGI Report Number LG550253567
Description LABORATORY GROWN DIAMOND
Shape and Cutting Style PEAR BRILLIANT
Measurements 8.19 X 5.07 X 2.91 MM

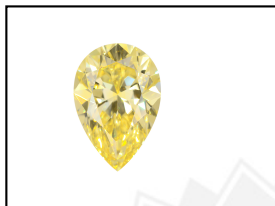
GRADING RESULTS

Carat Weight 0.71 CARAT
Color Grade FANCY VIVID YELLOW
Clarity Grade VS 2

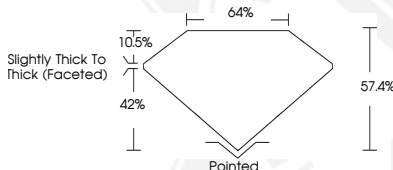
ADDITIONAL GRADING INFORMATION

Polish VERY GOOD
Symmetry VERY GOOD
Fluorescence NONE
Inscription(s) LABGROWN IGI LG550253567

Comments: As Grown - No indication of post-growth treatment.
This Laboratory Grown Diamond was created by High Pressure High Temperature (HPHT) growth process.



LASERSCRIBESM
Sample Images Used



**IGI LABORATORY GROWN
DIAMOND ID REPORT**

November 3, 2022
IGI Report Number **LG550253567**
PEAR BRILLIANT
8.19 X 5.07 X 2.91 MM
Carat Weight 0.71 CARAT
Color Grade FANCY VIVID
YELLOW
Clarity Grade VS 2
Polish VERY GOOD
Symmetry VERY GOOD
Fluorescence NONE
Inscription(s) LABGROWN IGI LG550253567

Comments: As Grown - No indication of post-growth treatment.
This Laboratory Grown Diamond was created by High Pressure High Temperature (HPHT) growth process.

THIS DOCUMENT WAS PRODUCED WITH THE FOLLOWING SECURITY MEASURES: SPECIAL DOCUMENT PAPER, INK SCREENS, WATERMARK, BACKGROUND DESIGN, HOLOGRAM AND OTHER SECURITY FEATURES NOT LISTED AND DO EXCEED DOCUMENT SECURITY INDUSTRY GUIDELINES.

For terms & conditions and to verify this report, please visit www.igi.org