

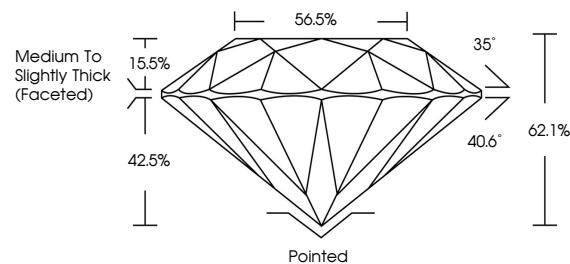


ELECTRONIC COPY

LABORATORY GROWN DIAMOND REPORT

LG550254801

PROPORTIONS



GRADING SCALES

Table with 2 rows: COLOR GRADING SCALE (CL, NC, FT, VLT, LT) and CLARITY (10x) GRADING SCALE (FL, IF, VVS, VS, SI, I).

October 10, 2022

IGI Report Number

LG550254801

Description

LABORATORY GROWN DIAMOND

Shape and Cutting Style

ROUND BRILLIANT

Measurements

8.97 - 9.01 X 5.58 MM

GRADING RESULTS

Carat Weight

2.80 CARATS

Color Grade

F

Clarity Grade

VVS 2

Cut Grade

IDEAL

October 10, 2022

IGI Report Number

LG550254801

Description

LABORATORY GROWN DIAMOND

Shape and Cutting Style

ROUND BRILLIANT

Measurements

8.97 - 9.01 X 5.58 MM

GRADING RESULTS

Carat Weight

2.80 CARATS

Color Grade

F

Clarity Grade

VVS 2

Cut Grade

IDEAL

ADDITIONAL GRADING INFORMATION

Polish

EXCELLENT

Symmetry

EXCELLENT

Fluorescence

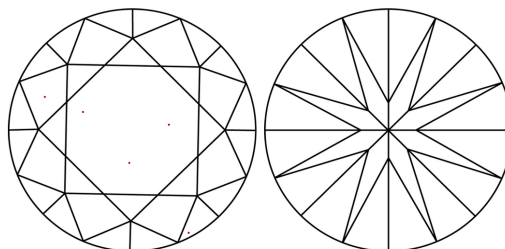
NONE

Inscription(s)

LABGROWN (LGI) LG550254801

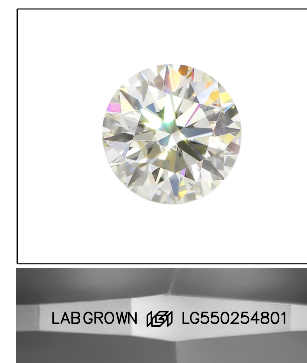
Comments: This Laboratory Grown Diamond was created by Chemical Vapor Deposition (CVD) growth process and may include post-growth treatment. Type IIa

CLARITY CHARACTERISTICS



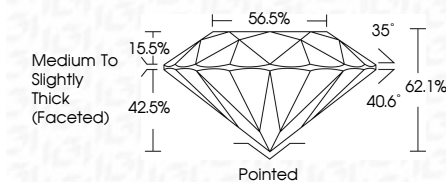
KEY TO SYMBOLS

Red symbols indicate internal characteristics. Green symbols indicate external characteristics.



LASERSCRIBE SM

Sample Image Used



ADDITIONAL GRADING INFORMATION

Polish

EXCELLENT

Symmetry

EXCELLENT

Fluorescence

NONE

Inscription(s)

LABGROWN (LGI) LG550254801

Comments: This Laboratory Grown Diamond was created by Chemical Vapor Deposition (CVD) growth process and may include post-growth treatment. Type IIa



IGI



Summary table of report details: October 10, 2022, IGI Report No. LG550254801, ROUND BRILLIANT, 8.97 - 9.01 X 5.58 MM, 2.80 CARATS, F, VVS 2, IDEAL, 62.1%, 56.5%, Medium To Slightly Thick (Faceted), Pointed, EXCELLENT, EXCELLENT, NONE, LABGROWN (LGI) LG550254801.