



ELECTRONIC COPY

LABORATORY GROWN DIAMOND REPORT

October 10, 2022
IGI Report Number LG550257427
Description LABORATORY GROWN DIAMOND
Shape and Cutting Style PRINCESS CUT
Measurements 9.99 X 9.91 X 6.89 MM

GRADING RESULTS

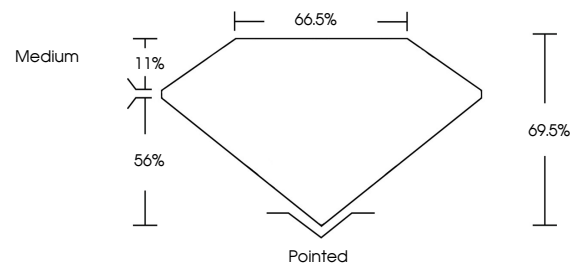
Carat Weight 5.86 CARATS
Color Grade G
Clarity Grade VS 1

ADDITIONAL GRADING INFORMATION

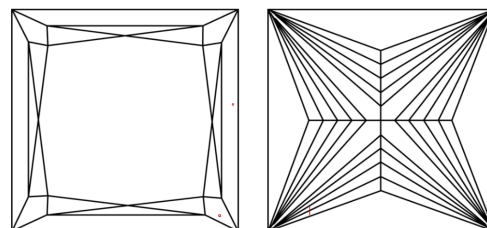
Polish EXCELLENT
Symmetry EXCELLENT
Fluorescence NONE
Inscription(s) LABGROWN IGI LG550257427
Comments: This Laboratory Grown Diamond was created by Chemical Vapor Deposition (CVD) growth process and may include post-growth treatment. Type IIa

LG550257427

PROPORTIONS



CLARITY CHARACTERISTICS

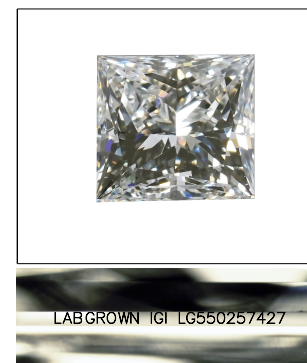


KEY TO SYMBOLS

Red symbols indicate internal characteristics.
Green symbols indicate external characteristics.

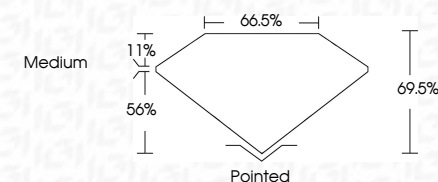
GRADING SCALES

Table with 2 rows: COLOR GRADING SCALE (CL, NC, FT, VLT, LT) and CLARITY (10x) GRADING SCALE (FL, IF, VVS, VS, SI, I).



LASERSCRIBE SM
Sample Image Used

October 10, 2022
IGI Report Number LG550257427
Description LABORATORY GROWN DIAMOND
Shape and Cutting Style PRINCESS CUT
Measurements 9.99 X 9.91 X 6.89 MM
GRADING RESULTS
Carat Weight 5.86 CARATS
Color Grade G
Clarity Grade VS 1



ADDITIONAL GRADING INFORMATION

Polish EXCELLENT
Symmetry EXCELLENT
Fluorescence NONE
Inscription(s) LABGROWN IGI LG550257427
Comments: This Laboratory Grown Diamond was created by Chemical Vapor Deposition (CVD) growth process and may include post-growth treatment. Type IIa



Summary card containing report details: October 10, 2022, IGI Report No. LG550257427, PRINCESS CUT, 5.86 CARATS, G, VS 1, 9.99 X 9.91 X 6.89 MM, 66.5% table, 66.5% depth, Medium grade, Pointed cutter, EXCELLENT polish and symmetry, NONE fluorescence, and inscription LABGROWN IGI LG550257427.

The Laboratory Grown Diamond was created by Chemical Vapor Deposition (CVD) growth process and may include post-growth treatment. Type IIa