



**ELECTRONIC COPY**

**LABORATORY GROWN DIAMOND REPORT**

November 22, 2022  
 IGI Report Number **LG550262268**  
 Description **LABORATORY GROWN  
DIAMOND**  
 Shape and Cutting Style **CUT CORNERED RECTANGULAR  
MODIFIED BRILLIANT**  
 Measurements **10.30 X 7.28 X 5.01 MM**  
**GRADING RESULTS**  
 Carat Weight **3.23 CARATS**  
 Color Grade **G**  
 Clarity Grade **SI 1**  
 Cut Grade **VERY GOOD**

**ADDITIONAL GRADING INFORMATION**

Polish **EXCELLENT**  
 Symmetry **VERY GOOD**  
 Fluorescence **NONE**

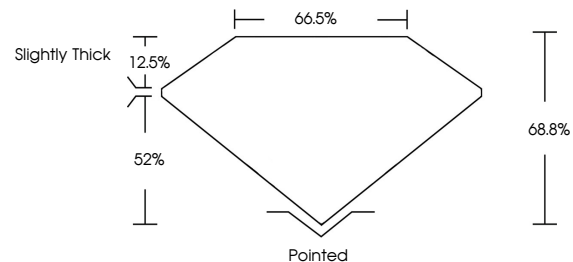
Inscription(s) **LABGROWN (L) LG550262268**

Comments: This Laboratory Grown Diamond was created by Chemical Vapor Deposition (CVD) growth process and may include post-growth treatment. Type IIa

**LABORATORY GROWN DIAMOND REPORT**

**LG550262268**  
 Report verification at [igi.org](http://igi.org)

**PROPORTIONS**



**LABORATORY GROWN  
DIAMOND REPORT**

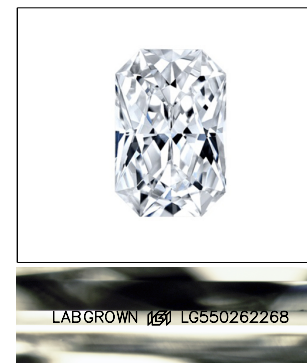
**GRADING SCALES**

**CLARITY**

IF	VVS <sup>1-2</sup>	VS <sup>1-2</sup>	SI <sup>1-2</sup>	I <sup>1-3</sup>
Internally Flawless	Very Very Slightly Included	Very Slightly Included	Slightly Included	Included

**COLOR**

D	E	F	G	H	I	J	Faint	Very Light	Light
---	---	---	---	---	---	---	-------	------------	-------

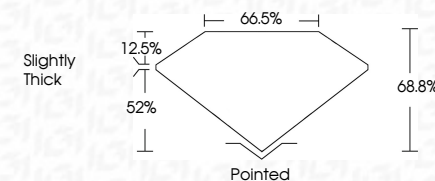


**LASERSCRIBE<sup>SM</sup>**

Sample Image Used

**LABORATORY GROWN DIAMOND REPORT**

November 22, 2022  
 IGI Report Number **LG550262268**  
 Description **LABORATORY GROWN  
DIAMOND**  
 Shape and Cutting Style **CUT CORNERED  
RECTANGULAR MODIFIED  
BRILLIANT**  
 Measurements **10.30 X 7.28 X 5.01 MM**  
**GRADING RESULTS**  
 Carat Weight **3.23 CARATS**  
 Color Grade **G**  
 Clarity Grade **SI 1**  
 Cut Grade **VERY GOOD**



**ADDITIONAL GRADING INFORMATION**

Polish **EXCELLENT**  
 Symmetry **VERY GOOD**  
 Fluorescence **NONE**  
 Inscription(s) **LABGROWN (L) LG550262268**

Comments: This Laboratory Grown Diamond was created by Chemical Vapor Deposition (CVD) growth process and may include post-growth treatment. Type IIa



**IGI**



November 22, 2022  
 IGI Report No LG550262268  
**CUT CORNERED RECT. MODIFIED BRILLIANT**  
 10.30 X 7.28 X 5.01 MM  
 Carat Weight **3.23 CARATS**  
 Color Grade **G**  
 Clarity Grade **SI 1**  
 Cut Grade **VERY GOOD**  
 Depth **68.8%**  
 Table **66.5%**  
 Girdle **Slightly Thick**  
 Culet **Pointed**  
 Polish **EXCELLENT**  
 Symmetry **VERY GOOD**  
 Fluorescence **NONE**  
 Inscription(s) **LABGROWN (L) LG550262268**

Comments: This Laboratory Grown Diamond was created by Chemical Vapor Deposition (CVD) growth process and may include post-growth treatment. Type IIa