



**INTERNATIONAL  
GEMOLOGICAL  
INSTITUTE**

**ELECTRONIC COPY**

**LABORATORY GROWN  
DIAMOND REPORT**

**LG550263014**

**IGI LABORATORY GROWN  
DIAMOND ID REPORT**

December 12, 2022  
IGI Report Number **LG550263014**  
**OVAL BRILLIANT**  
**7.77 X 5.49 X 3.45 MM**  
Carat Weight 0.94 CARAT  
Color Grade F  
Clarity Grade VS 2  
Cut Grade VERY GOOD  
Polish EXCELLENT  
Symmetry EXCELLENT  
Fluorescence NONE  
Inscription(s) LABGROWN (IGI) LG550263014

Comments: This Laboratory Grown Diamond was created by Chemical Vapor Deposition (CVD) growth process and may include post-growth treatment.Type IIa

**LABORATORY GROWN DIAMOND REPORT**

**IGI LABORATORY GROWN DIAMOND IDENTIFICATION REPORT**

December 12, 2022  
IGI Report Number LG550263014  
Description LABORATORY GROWN DIAMOND  
Shape and Cutting Style OVAL BRILLIANT  
Measurements 7.77 X 5.49 X 3.45 MM

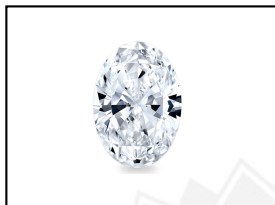
**GRADING RESULTS**

Carat Weight 0.94 CARAT  
Color Grade F  
Clarity Grade VS 2  
Cut Grade VERY GOOD

**ADDITIONAL GRADING INFORMATION**

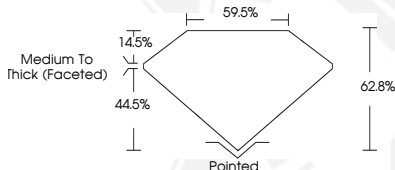
Polish EXCELLENT  
Symmetry EXCELLENT  
Fluorescence NONE  
Inscription(s) LABGROWN (IGI) LG550263014

Comments: This Laboratory Grown Diamond was created by Chemical Vapor Deposition (CVD) growth process and may include post-growth treatment.  
Type IIa



LABGROWN (IGI) LG550263014

**LASERSCRIBE<sup>SM</sup>**  
Sample Images Used



**IGI LABORATORY GROWN  
DIAMOND ID REPORT**

December 12, 2022  
IGI Report Number **LG550263014**  
**OVAL BRILLIANT**  
**7.77 X 5.49 X 3.45 MM**  
Carat Weight 0.94 CARAT  
Color Grade F  
Clarity Grade VS 2  
Cut Grade VERY GOOD  
Polish EXCELLENT  
Symmetry EXCELLENT  
Fluorescence NONE  
Inscription(s) LABGROWN (IGI) LG550263014

Comments: This Laboratory Grown Diamond was created by Chemical Vapor Deposition (CVD) growth process and may include post-growth treatment.Type IIa

THIS DOCUMENT WAS PRODUCED WITH THE FOLLOWING SECURITY MEASURES: SPECIAL DOCUMENT PAPER, INK SCREENS, WATERMARK, BACKGROUND DESIGN, HOLOGRAM AND OTHER SECURITY FEATURES NOT LISTED AND DO EXCEED DOCUMENT SECURITY INDUSTRY GUIDELINES.

For terms & conditions and to verify this report, please visit [www.igi.org](http://www.igi.org)