



ELECTRONIC COPY

LABORATORY GROWN DIAMOND REPORT

October 11, 2022
 IGI Report Number **LG550268654**
 Description **LABORATORY GROWN
DIAMOND**
 Shape and Cutting Style **CUT CORNERED RECTANGULAR
MODIFIED BRILLIANT**
 Measurements **10.30 X 7.32 X 5.05 MM**

GRADING RESULTS

Carat Weight **3.52 CARATS**
 Color Grade **F**
 Clarity Grade **SI 1**

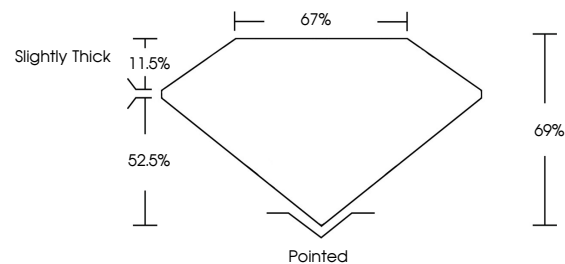
ADDITIONAL GRADING INFORMATION

Polish **EXCELLENT**
 Symmetry **EXCELLENT**
 Fluorescence **NONE**
 Inscription(s) **LABGROWN IGI LG550268654**

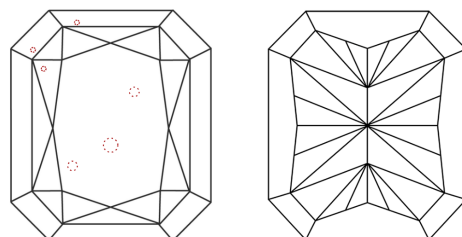
Comments: This Laboratory Grown Diamond was created by Chemical Vapor Deposition (CVD) growth process and may include post-growth treatment. Type IIa

LG550268654

PROPORTIONS



CLARITY CHARACTERISTICS



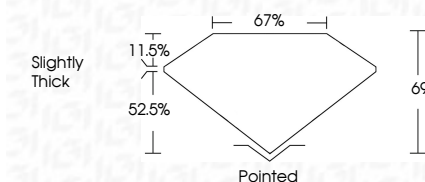
KEY TO SYMBOLS

Red symbols indicate internal characteristics.
 Green symbols indicate external characteristics.

October 11, 2022
 IGI Report Number **LG550268654**
 Description **LABORATORY GROWN
DIAMOND**
 Shape and Cutting Style **CUT CORNERED
RECTANGULAR MODIFIED
BRILLIANT**
 Measurements **10.30 X 7.32 X 5.05 MM**

GRADING RESULTS

Carat Weight **3.52 CARATS**
 Color Grade **F**
 Clarity Grade **SI 1**



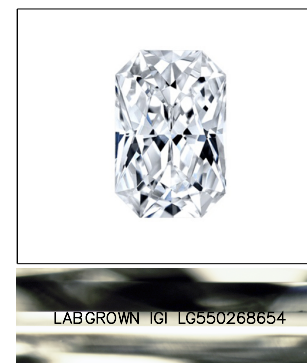
ADDITIONAL GRADING INFORMATION

Polish **EXCELLENT**
 Symmetry **EXCELLENT**
 Fluorescence **NONE**
 Inscription(s) **LABGROWN IGI LG550268654**

Comments: This Laboratory Grown Diamond was created by Chemical Vapor Deposition (CVD) growth process and may include post-growth treatment. Type IIa

GRADING SCALES

COLOR GRADING SCALE	CL	NC	FT	VLT	LT	
	COLORLESS D-F	NEAR COLORLESS G-J	FAINT K-M	VERY LIGHT N-R	LIGHT S-Z	
CLARITY (10x) GRADING SCALE	FL	IF	VVS	VS	SI	I
	FLAWLESS INTERNALLY FLAWLESS	VERY VERY SLIGHTLY INCLUDED	VERY SLIGHTLY INCLUDED	SLIGHTLY INCLUDED	INCLUDED	



LASERSCRIBESM

Sample Image Used



October 11, 2022	IGI Report No LG550268654	CUT CORNERED RECT. MODIFIED	10.30 X 7.32 X 5.05 MM	3.52 CARATS	F	SI 1	69%	67%	Slightly Thick	Pointed	EXCELLENT	EXCELLENT	NONE	LABGROWN IGI LG550268654	Comments:

This Laboratory Grown Diamond was created by Chemical Vapor Deposition (CVD) growth process and may include post-growth treatment. Type IIa