



**INTERNATIONAL
GEMOLOGICAL
INSTITUTE**

ELECTRONIC COPY

**LABORATORY GROWN
DIAMOND REPORT**

**IGI LABORATORY GROWN
DIAMOND ID REPORT**

October 17, 2022
IGI Report Number **LG551201231**

LABORATORY GROWN DIAMOND REPORT

IGI LABORATORY GROWN DIAMOND IDENTIFICATION REPORT

October 17, 2022
IGI Report Number **LG551201231**
Description **LABORATORY GROWN DIAMOND**
Shape and Cutting Style **PEAR BRILLIANT**
Measurements **8.01 X 5.16 X 3.20 MM**

GRADING RESULTS

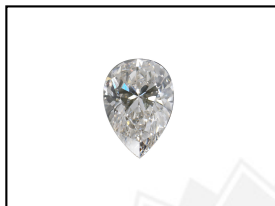
Carat Weight **0.79 CARAT**
Color Grade **E**
Clarity Grade **SI 1**

ADDITIONAL GRADING INFORMATION

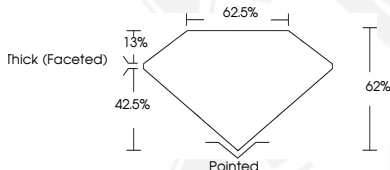
Polish **VERY GOOD**
Symmetry **VERY GOOD**
Fluorescence **NONE**
Inscription(s) **LABGROWN IGI LG551201231**

Comments: This Laboratory Grown Diamond was created by Chemical Vapor Deposition (CVD) growth process and may include post-growth treatment.
Type IIa

LG551201231



LASERSCRIBESM
Sample Images Used



PEAR BRILLIANT
8.01 X 5.16 X 3.20 MM
Carat Weight **0.79 CARAT**
Color Grade **E**
Clarity Grade **SI 1**
Polish **VERY GOOD**
Symmetry **VERY GOOD**
Fluorescence **NONE**
Inscription(s) **LABGROWN IGI LG551201231**

Comments: This Laboratory Grown Diamond was created by Chemical Vapor Deposition (CVD) growth process and may include post-growth treatment.
Type IIa

**IGI LABORATORY GROWN
DIAMOND ID REPORT**

October 17, 2022
IGI Report Number **LG551201231**

PEAR BRILLIANT
8.01 X 5.16 X 3.20 MM
Carat Weight **0.79 CARAT**
Color Grade **E**
Clarity Grade **SI 1**
Polish **VERY GOOD**
Symmetry **VERY GOOD**
Fluorescence **NONE**
Inscription(s) **LABGROWN IGI LG551201231**

Comments: This Laboratory Grown Diamond was created by Chemical Vapor Deposition (CVD) growth process and may include post-growth treatment.
Type IIa

THIS DOCUMENT WAS PRODUCED WITH THE FOLLOWING SECURITY MEASURES: SPECIAL DOCUMENT PAPER, INK SCREENS, WATERMARK, BACKGROUND DESIGN, HOLOGRAM AND OTHER SECURITY FEATURES NOT LISTED AND DO EXCEED DOCUMENT SECURITY INDUSTRY GUIDELINES.

For terms & conditions and to verify this report, please visit www.igi.org