



ELECTRONIC COPY

LABORATORY GROWN DIAMOND REPORT

October 16, 2022
 IGI Report Number **LG551211041**
 Description **LABORATORY GROWN
DIAMOND**
 Shape and Cutting Style **ROUND BRILLIANT**
 Measurements **8.29 - 8.34 X 5.22 MM**

GRADING RESULTS

Carat Weight **2.24 CARATS**
 Color Grade **F**
 Clarity Grade **VS 1**
 Cut Grade **EXCELLENT**

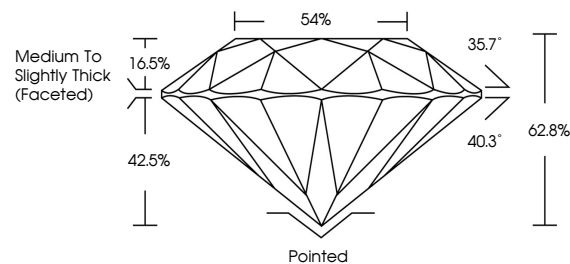
ADDITIONAL GRADING INFORMATION

Polish **EXCELLENT**
 Symmetry **EXCELLENT**
 Fluorescence **NONE**
 Inscription(s) **LABGROWN (IGI) LG551211041**

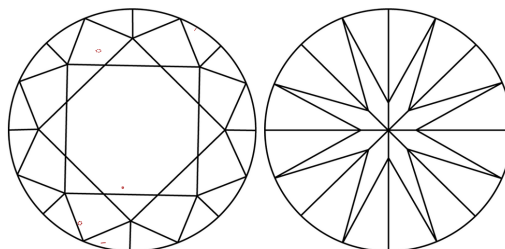
Comments: This Laboratory Grown Diamond was created by Chemical Vapor Deposition (CVD) growth process and may include post-growth treatment. Type IIa

LG551211041

PROPORTIONS



CLARITY CHARACTERISTICS



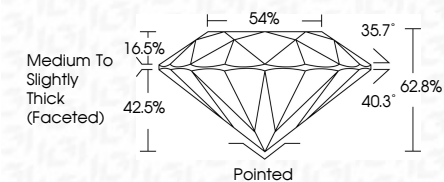
KEY TO SYMBOLS

Red symbols indicate internal characteristics.
 Green symbols indicate external characteristics.

GRADING SCALES

| COLOR GRADING SCALE | CL | NC | FT | VL | LT | |
|-----------------------------|------------------------------|-----------------------------|------------------------|-------------------|-----------|---|
| | COLORLESS D-F | NEAR COLORLESS G-J | FAINT K-M | VERY LIGHT N-R | LIGHT S-Z | |
| CLARITY (10x) GRADING SCALE | FL | IF | VVS | VS | SI | I |
| | FLAWLESS INTERNALLY FLAWLESS | VERY VERY SLIGHTLY INCLUDED | VERY SLIGHTLY INCLUDED | SLIGHTLY INCLUDED | INCLUDED | |

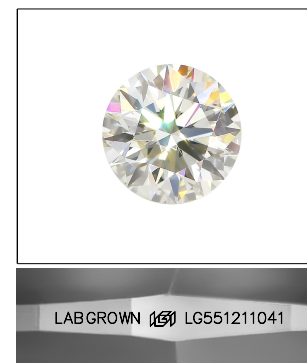
October 16, 2022
 IGI Report Number **LG551211041**
 Description **LABORATORY GROWN
DIAMOND**
 Shape and Cutting Style **ROUND BRILLIANT**
 Measurements **8.29 - 8.34 X 5.22 MM**
GRADING RESULTS
 Carat Weight **2.24 CARATS**
 Color Grade **F**
 Clarity Grade **VS 1**
 Cut Grade **EXCELLENT**



ADDITIONAL GRADING INFORMATION

Polish **EXCELLENT**
 Symmetry **EXCELLENT**
 Fluorescence **NONE**
 Inscription(s) **LABGROWN (IGI) LG551211041**

Comments: This Laboratory Grown Diamond was created by Chemical Vapor Deposition (CVD) growth process and may include post-growth treatment. Type IIa



LASERSCRIBESM

Sample Image Used



IGI

October 16, 2022
 IGI Report No **LG551211041**
ROUND BRILLIANT
8.29 - 8.34 X 5.22 MM
 Carat Weight **2.24 CARATS**
 Color Grade **F**
 Clarity Grade **VS 1**
 Cut Grade **EXCELLENT**
 Depth **62.8%**
 Table **54%**
 Grade **Medium To Slightly Thick (Faceted)**
 Culet **Pointed**
 Polish **EXCELLENT**
 Symmetry **EXCELLENT**
 Fluorescence **NONE**
 Inscription(s) **LABGROWN (IGI) LG551211041**
 Comments: This Laboratory Grown Diamond was created by Chemical Vapor Deposition (CVD) growth process and may include post-growth treatment. Type IIa