



ELECTRONIC COPY

LABORATORY GROWN DIAMOND REPORT

October 11, 2022
IGI Report Number **LG551274402**
Description **LABORATORY GROWN
DIAMOND**
Shape and Cutting Style **ROUND BRILLIANT**
Measurements **7.43 - 7.47 X 4.66 MM**

GRADING RESULTS

Carat Weight **1.61 CARAT**
Color Grade **F**
Clarity Grade **SI 1**
Cut Grade **IDEAL**

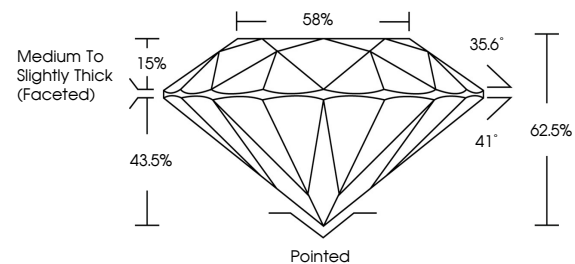
ADDITIONAL GRADING INFORMATION

Polish **EXCELLENT**
Symmetry **EXCELLENT**
Fluorescence **NONE**
Inscription(s) **LABGROWN (LGI) LG551274402**

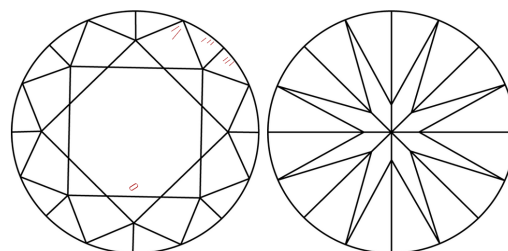
Comments: As Grown - No indication of post-growth treatment.
This Laboratory Grown Diamond was created by High Pressure High Temperature (HPHT) growth process. Type II

LG551274402

PROPORTIONS



CLARITY CHARACTERISTICS



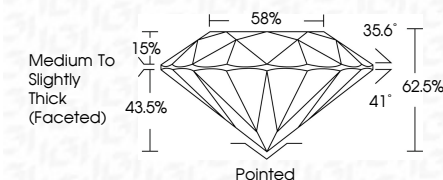
KEY TO SYMBOLS

Red symbols indicate internal characteristics.
Green symbols indicate external characteristics.

GRADING SCALES

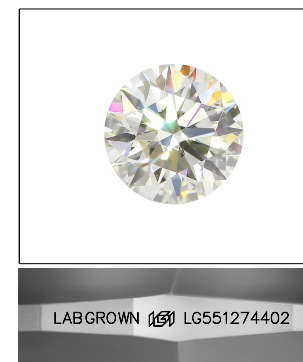
| COLOR GRADING SCALE | CL | NC | FT | VLT | LT | |
|-----------------------------|------------------------------|-----------------------------|------------------------|-------------------|-----------|---|
| | COLORLESS D-F | NEAR COLORLESS G-J | FAINT K-M | VERY LIGHT N-R | LIGHT S-Z | |
| CLARITY (10x) GRADING SCALE | FL | IF | VVS | VS | SI | I |
| | FLAWLESS INTERNALLY FLAWLESS | VERY VERY SLIGHTLY INCLUDED | VERY SLIGHTLY INCLUDED | SLIGHTLY INCLUDED | INCLUDED | |

October 11, 2022
IGI Report Number **LG551274402**
Description **LABORATORY GROWN
DIAMOND**
Shape and Cutting Style **ROUND BRILLIANT**
Measurements **7.43 - 7.47 X 4.66 MM**
GRADING RESULTS
Carat Weight **1.61 CARAT**
Color Grade **F**
Clarity Grade **SI 1**
Cut Grade **IDEAL**



ADDITIONAL GRADING INFORMATION

Polish **EXCELLENT**
Symmetry **EXCELLENT**
Fluorescence **NONE**
Inscription(s) **LABGROWN (LGI) LG551274402**
Comments: As Grown - No indication of post-growth treatment.
This Laboratory Grown Diamond was created by High Pressure High Temperature (HPHT) growth process. Type II



LASERSCRIBESM
Sample Image Used



| | | | | | | | | | | | | | | | | |
|------------------|---------------------------|-----------------|-----------------------|------------|-------|-------|-------|--------|----------|------------------------------------|----------------|-----------|-----------|------|----------------------------|--|
| October 11, 2022 | IGI Report No LG551274402 | ROUND BRILLIANT | 7.43 - 7.47 X 4.66 MM | 1.61 CARAT | F | SI 1 | IDEAL | 62.5% | 58% | Medium To Slightly Thick (Faceted) | Pointed | EXCELLENT | EXCELLENT | NONE | LABGROWN (LGI) LG551274402 | As Grown - No indication of post-growth treatment. The Laboratory Grown Diamond was created by High Pressure High Temperature (HPHT) growth process. Type II |
| Carat Weight | Color Grade | Clarity Grade | Cut Grade | Depth | Table | Grade | Culet | Polish | Symmetry | Fluorescence | Inscription(s) | Comments: | | | | |