



**ELECTRONIC COPY**

## LABORATORY GROWN DIAMOND REPORT

October 11, 2022	
IGI Report Number	LG551274668
Description	LABORATORY GROWN DIAMOND
Shape and Cutting Style	ROUND BRILLIANT
Measurements	7.47 - 7.50 X 4.71 MM

## GRADING RESULTS

Carat Weight	1.61 CARAT
Color Grade	D
Clarity Grade	VS 1
Cut Grade	EXCELLENT

### ADDITIONAL GRADING INFORMATION

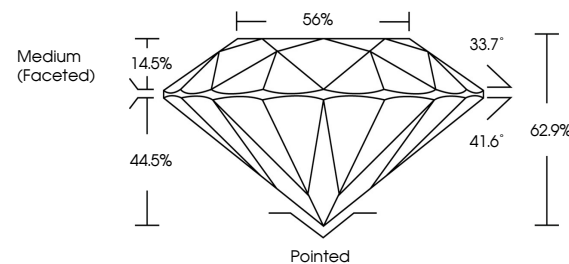
Polish	EXCELLENT
Symmetry	EXCELLENT
Fluorescence	NONE

Inscription(s) LABGROWN IGI LG551274668

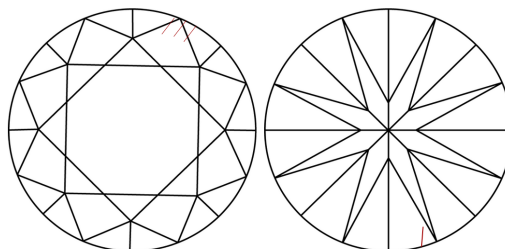
Comments: As Grown - No indication of post-growth treatment.  
This Laboratory Grown Diamond was created by High Pressure High Temperature (HPHT) growth process.  
Type II

LG551274668

## PROPORTIONS



## CLARITY CHARACTERISTICS

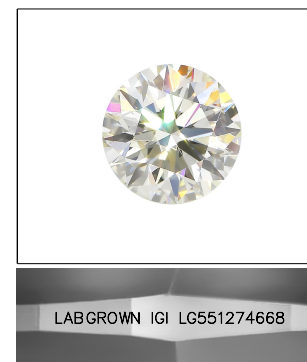


### KEY TO SYMBOLS

Red symbols indicate internal characteristics.  
Green symbols indicate external characteristics.

## GRADING SCALES

COLOR GRADING SCALE	CL		NC		FT		VLT		LT	
	COLORLESS D-F		NEAR COLORLESS G-J		FAINT K-M		VERY LIGHT N-R		LIGHT S-Z	
CLARITY (10x) GRADING SCALE	FL IF		VVS		VS		SI		I	
	FLAWLESS INTERNALLY FLAWLESS		VERY VERY SLIGHTLY INCLUDED		VERY SLIGHTLY INCLUDED		SLIGHTLY INCLUDED		INCLUDED	

LASERSCRIBE<sup>SM</sup>

Sample Image Used

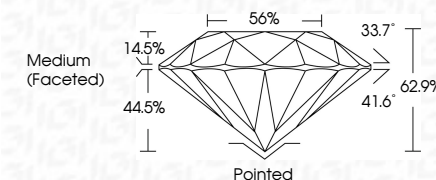


© IGI 2020, International Gemological Institute

FD - 10 20

## LABORATORY GROWN DIAMOND REPORT

October 11, 2022	
IGI Report Number	LG551274668
Description	LABORATORY GROWN DIAMOND
Shape and Cutting Style	ROUND BRILLIANT
Measurements	7.47 - 7.50 X 4.71 MM
<b>GRADING RESULTS</b>	
Carat Weight	1.61 CARAT
Color Grade	D
Clarity Grade	VS 1
Cut Grade	EXCELLENT



### ADDITIONAL GRADING INFORMATION

Polish	EXCELLENT
Symmetry	EXCELLENT
Fluorescence	NONE
Inscription(s)	LABGROWN IGI LG551274668

Comments: As Grown - No indication of post-growth treatment.  
This Laboratory Grown Diamond was created by High Pressure High Temperature (HPHT) growth process.  
Type II



<b>Date:</b>	October 11, 2022
<b>ID Report No:</b>	LGS651274668
<b>Gemstone:</b>	SOUND BRILLIANT
<b>Weight:</b>	4.71 MM 4.7 - 7.50 X 4.71 MM
<b>Color:</b>	Color Grade D
<b>Cut:</b>	VS 1
<b>Clarity:</b>	EXCELLENT
<b>Depth:</b>	62%
<b>Table:</b>	56%
<b>Girdle:</b>	Medium (Faceted)
<b>Fluorescence:</b>	Faint
<b>Symmetry:</b>	EXCELLENT
<b>Inclusions:</b>	NONE
<b>Comments:</b>	LARGESONIN LG-LS651274668
<b>As Grown - No indication of post-growth treatment.</b>	
<b>This Laboratory's Growth Diamond was created by High Pressure High Temperature (HPHT) growth process.</b>	

**www.igi.org**